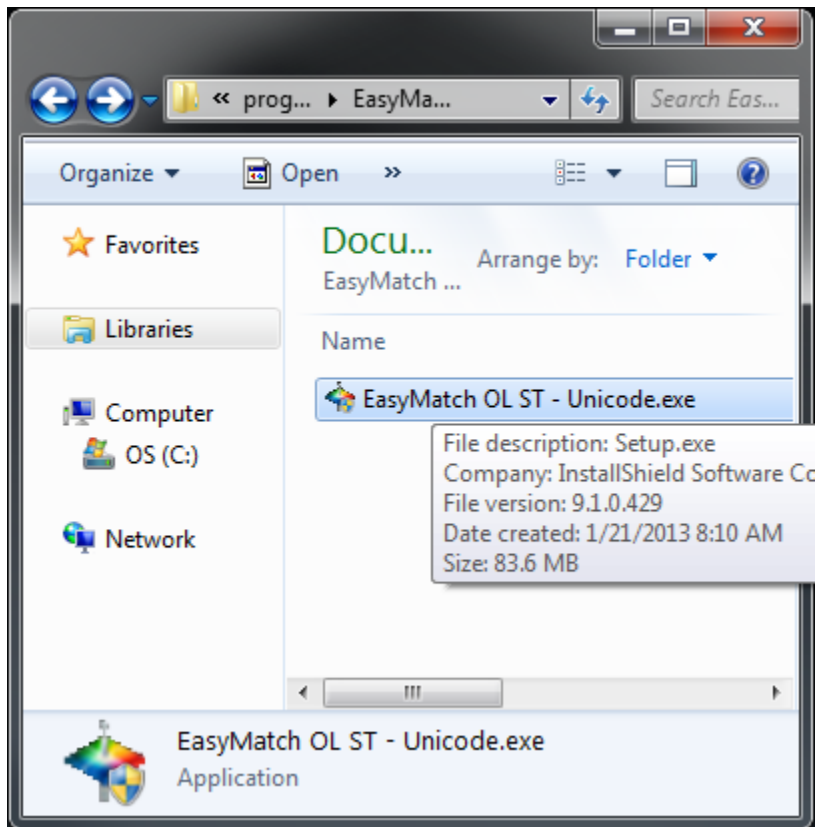
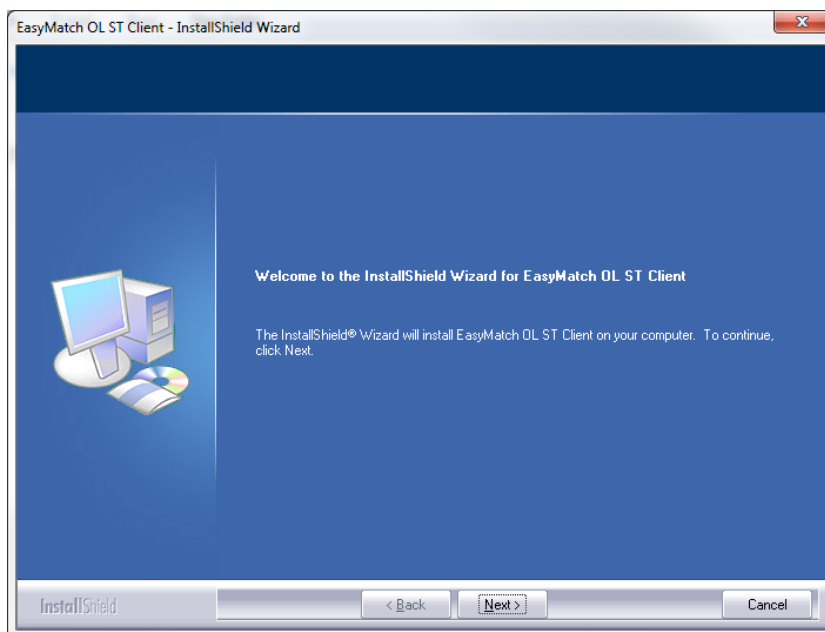


Installing EasyMatch OL ST

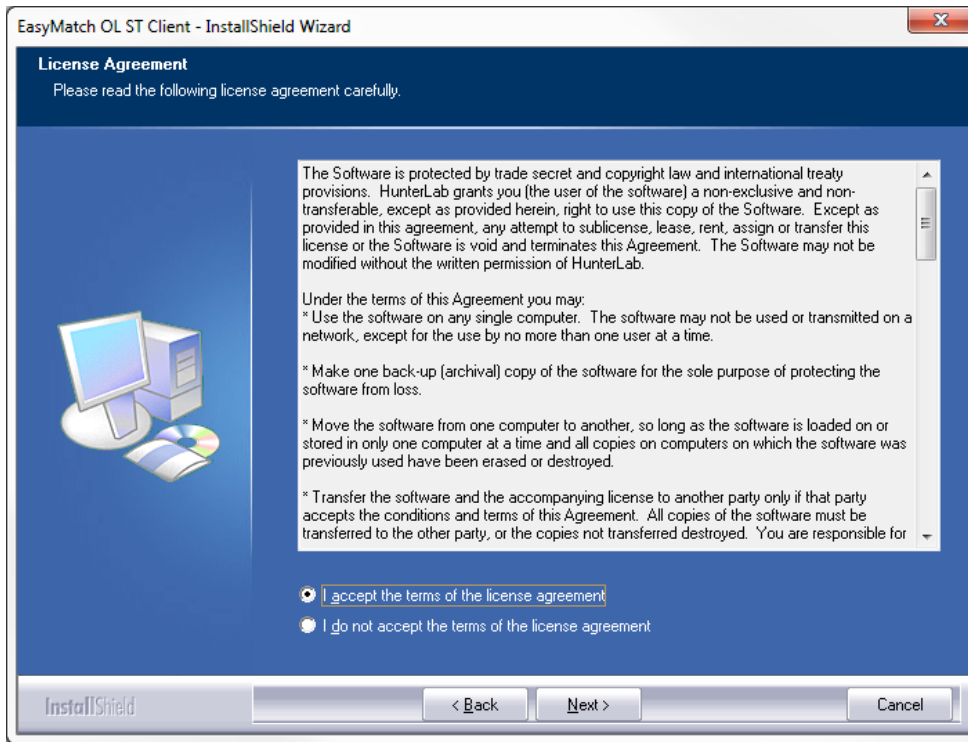
- 1) Double Click on the file EasyMatch OL ST- Unicode.exe to start the installation.



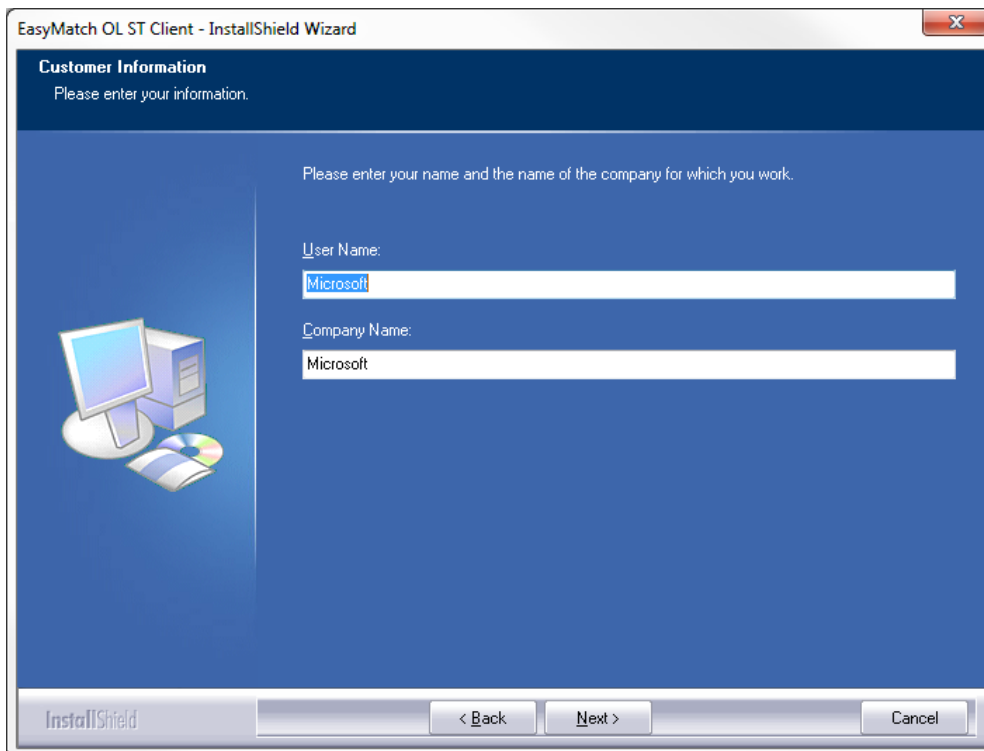
- 2) Follow the screen Prompts



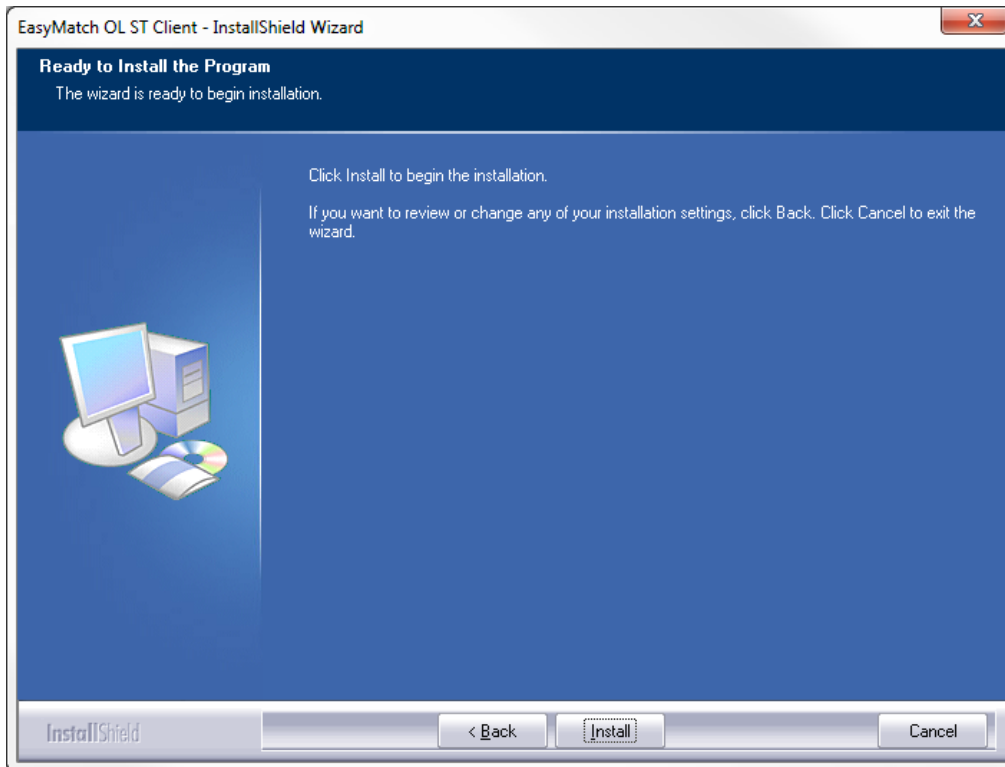
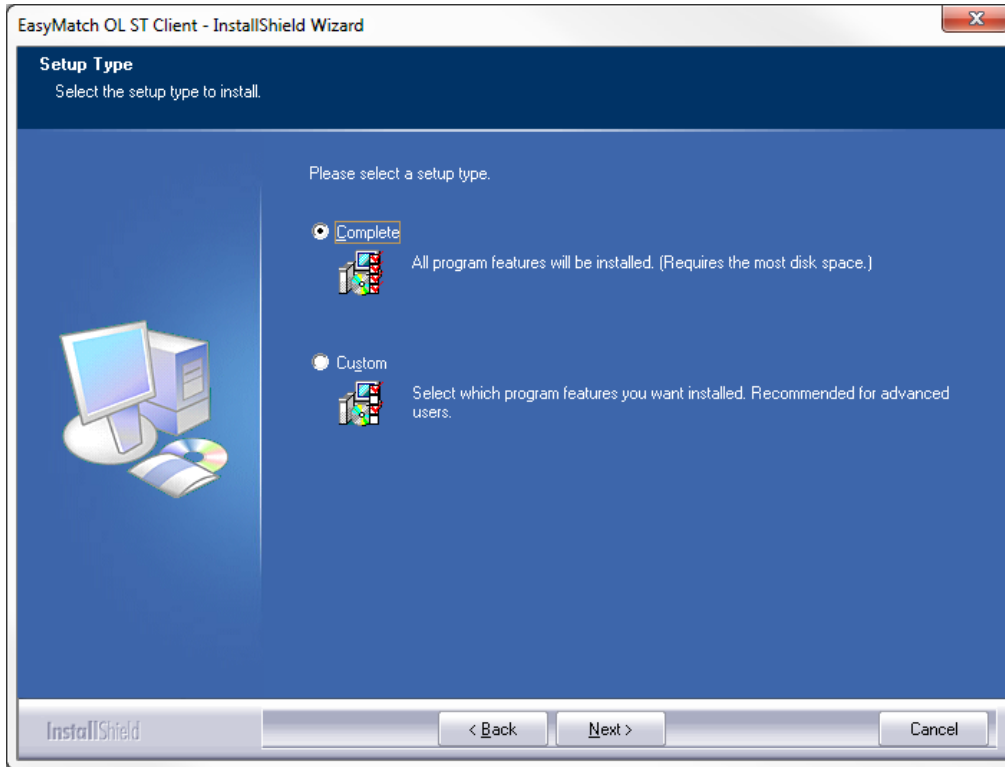
3) Check the license agreement box



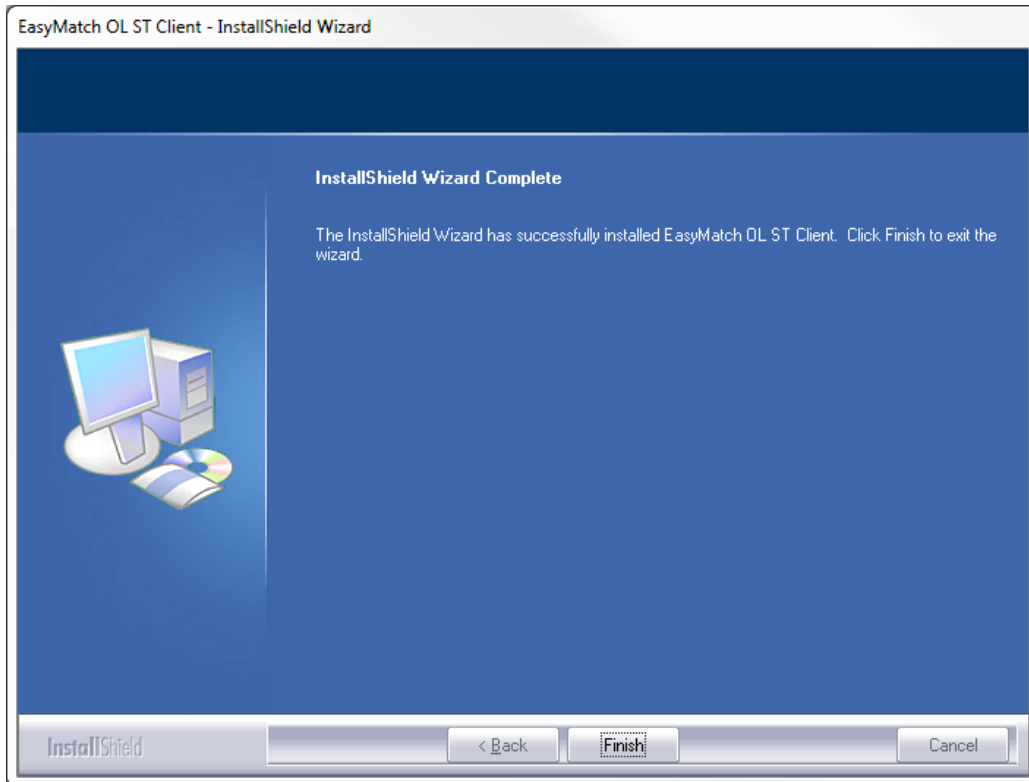
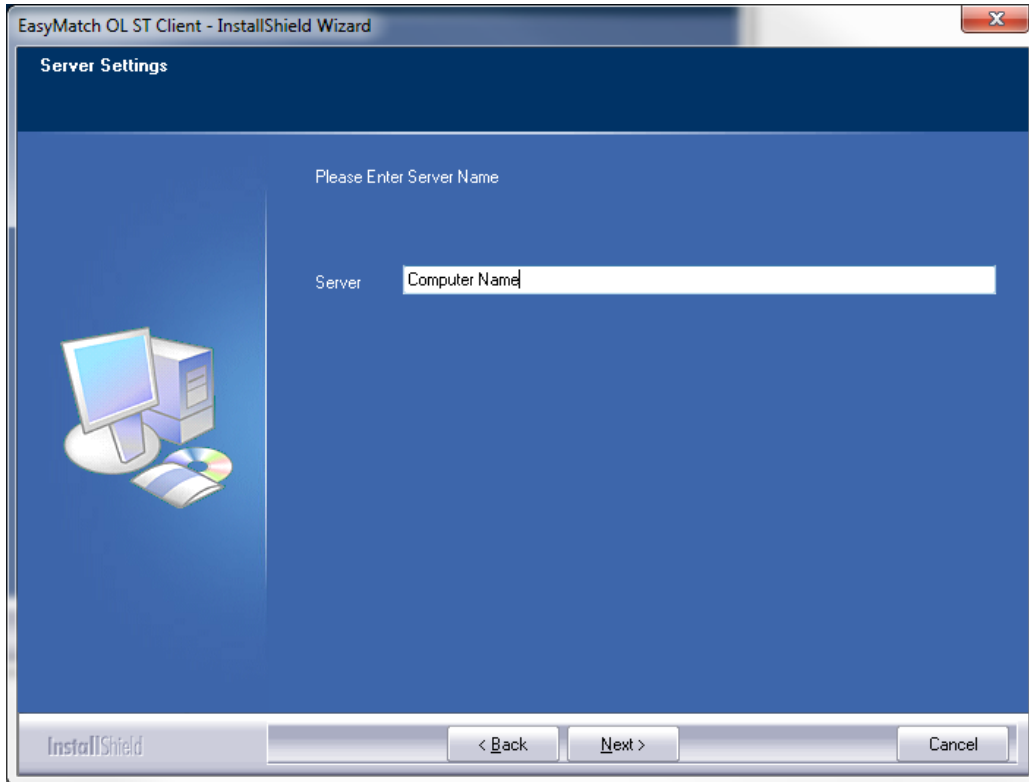
4) Enter your Company Name. The software will begin installation



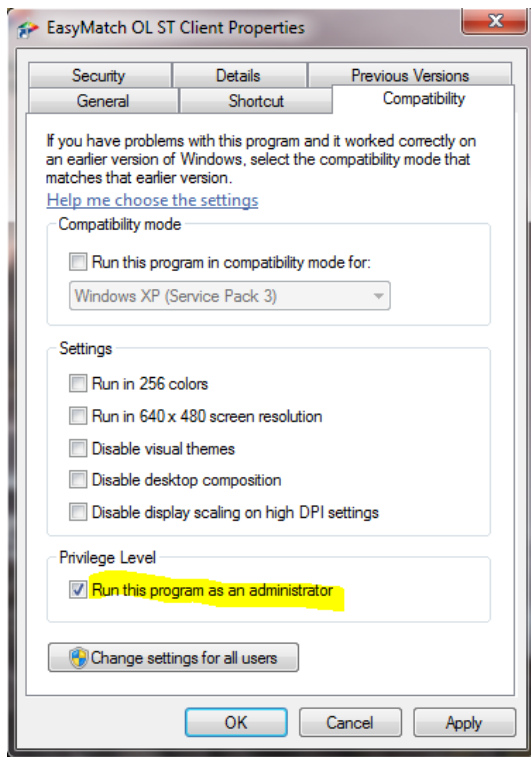
5) Select Complete type and click Next



6) The name of your computer will be displayed as the Server Name. Select Next.

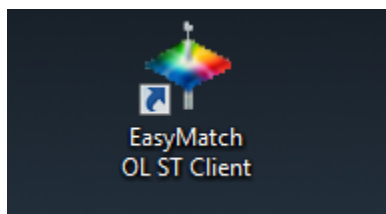


- 7) For Windows 7 and Windows 8 Operating systems: Right Click on icon and select properties. From the Compatibility Tab, check “Run as Administrator” box.



Starting the Program for the first time

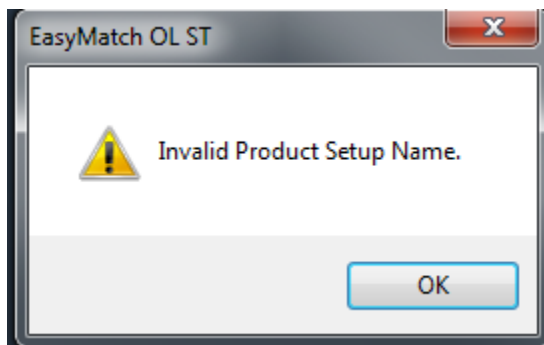
- 1) Double click on the EasyMatch OL ST Client Icon on your desktop to start the software.



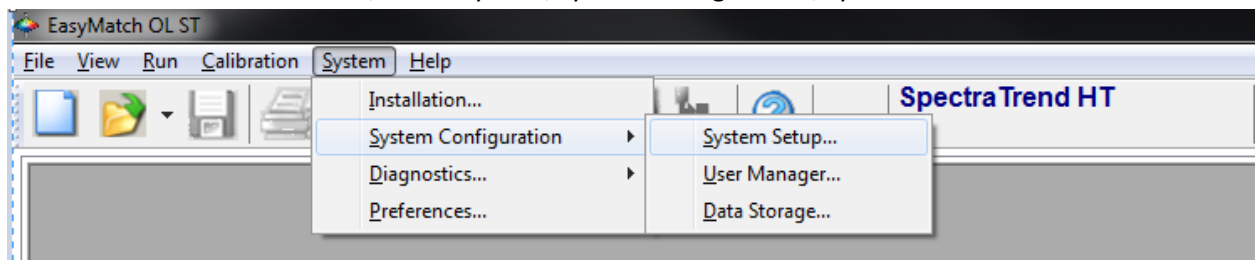
- 2) Enter 'admin' for the User Name and 'hunterlab' for the Password. This is case sensitive.

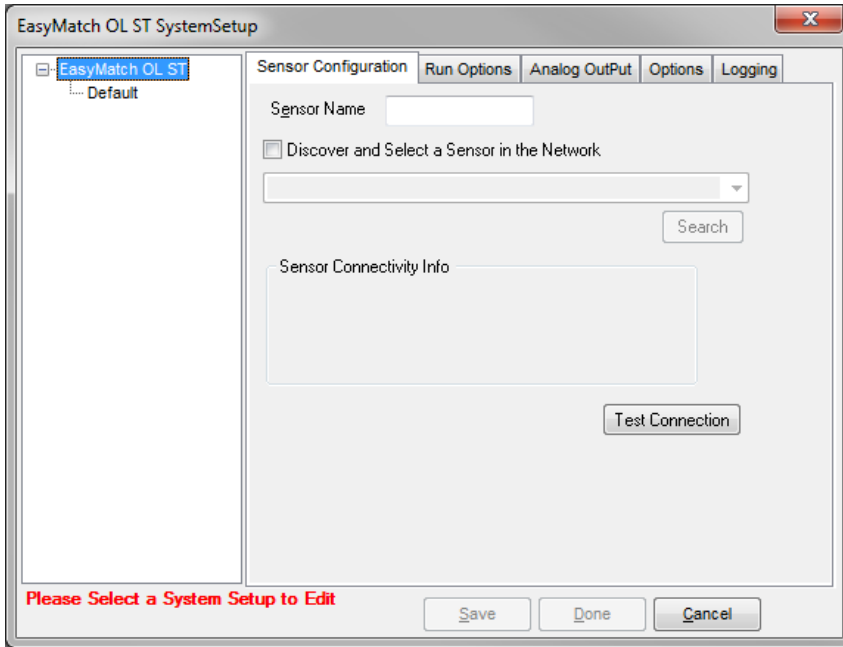


- 3) A message will appear indicating you have not yet set up a Product Setup Name. Click OK to continue.

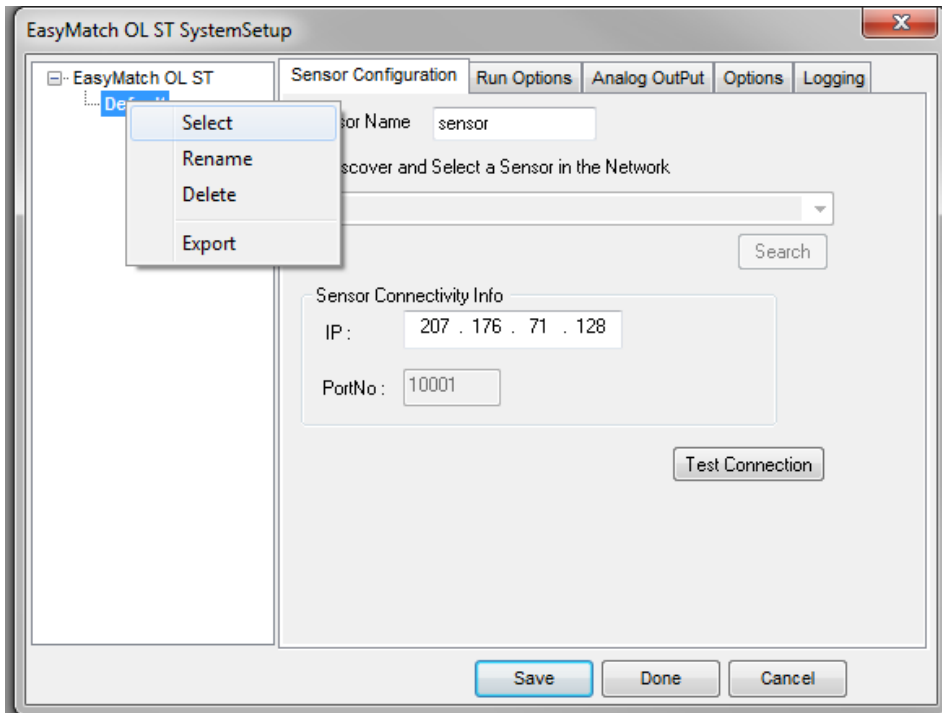


- 4) From the Main Screen Toolbar, select System/System Configuration/System Set...

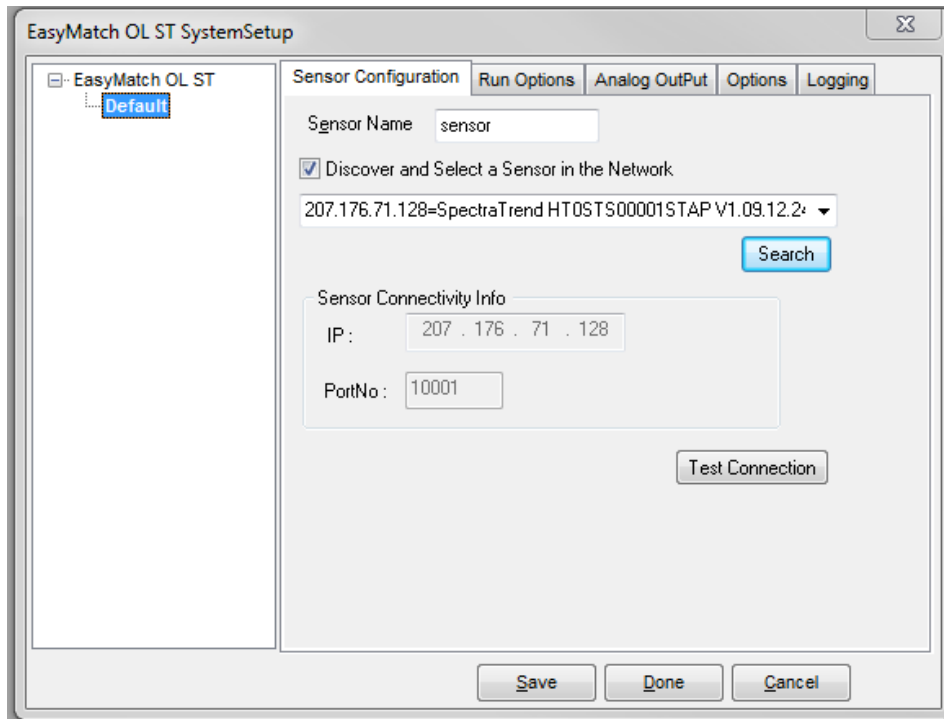




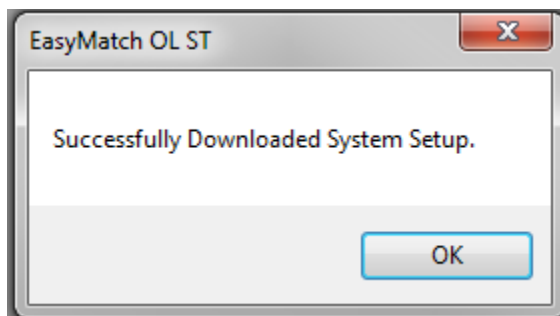
5) Right Click on Default and then click Select from the dropdown menu.



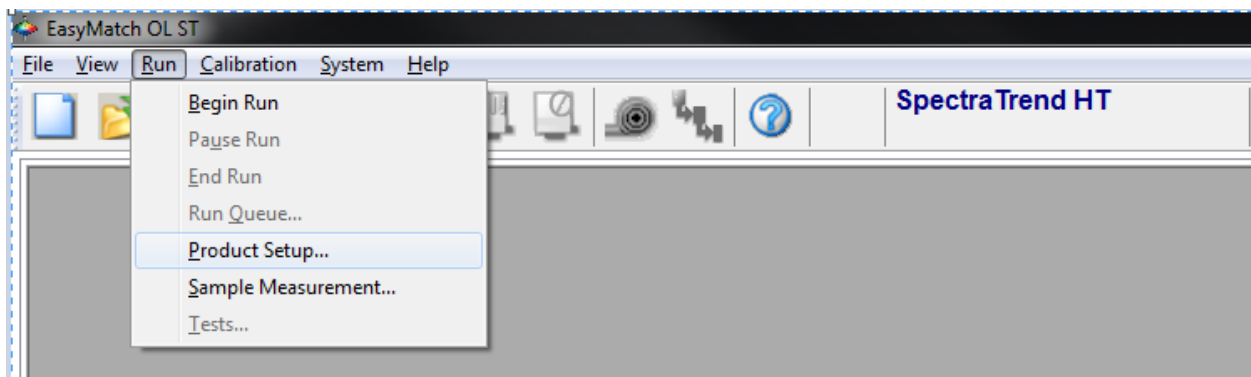
- 6) Check the box for Discover and Select a Sensor on the Network and then click Search.



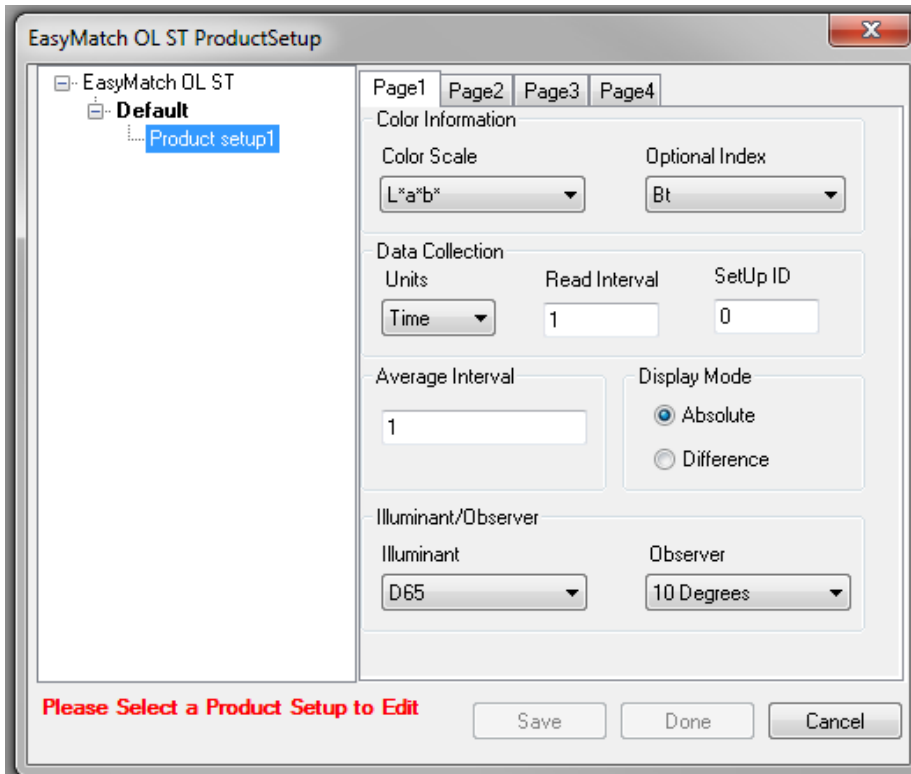
- 7) Click the Test Connection button and then click Done



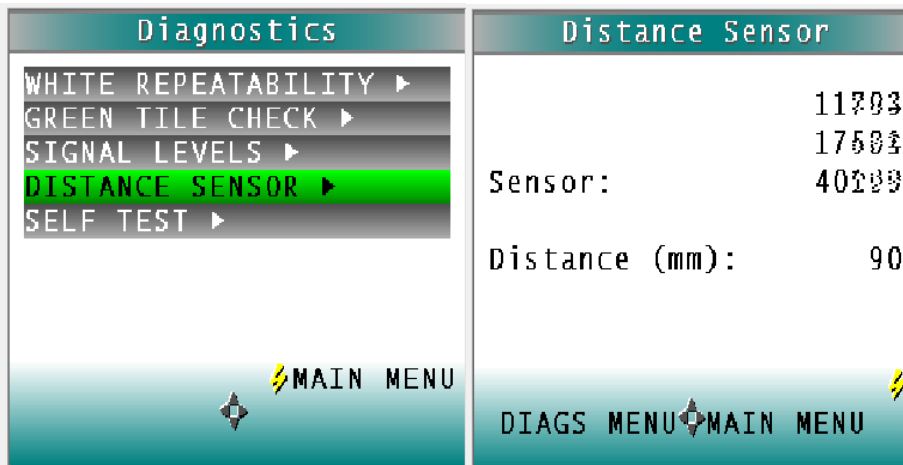
- 8) From the Main Menu Toolbar, select Run/Product Setup...

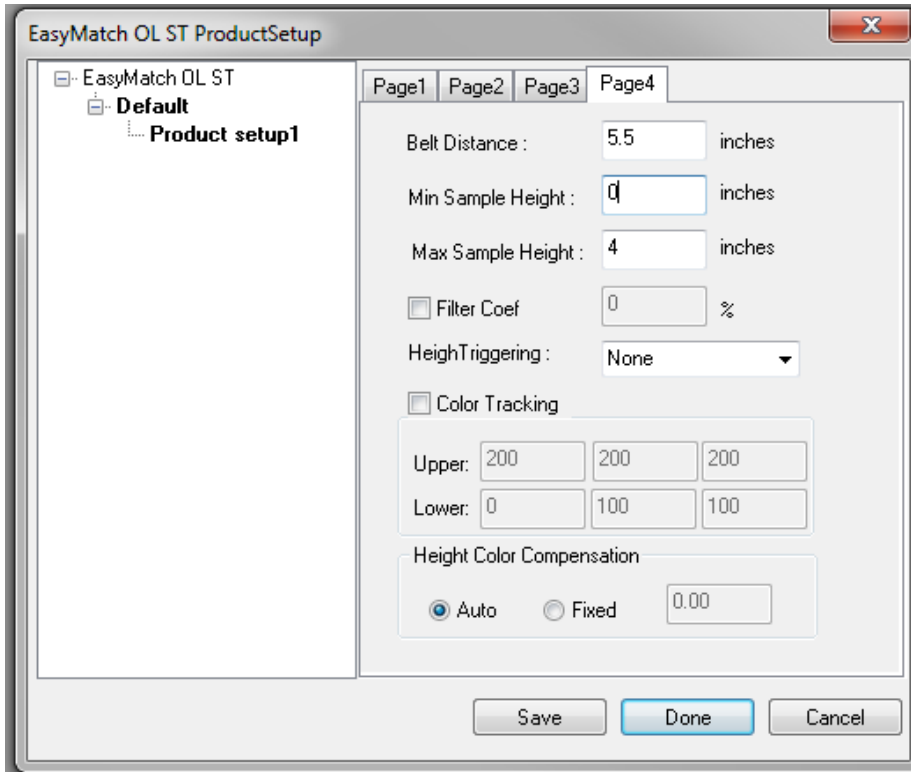


- 9) Right Click on Product setup 1 and then click and Select. Set up your preferences for Color Scale and measurement types.



- 10) Make sure to check Page4 for proper heights . The sensor should be located approximately 3.5 inches (90 mm) from the top of your product for best results. Use the front panel of the sensor to check the heights. Select the Diagnostics/Distance Sensor on the front panel to display the distance from the sensor to the top of the product to be measured.





11) Click Save and then click Done to download the product setup.

