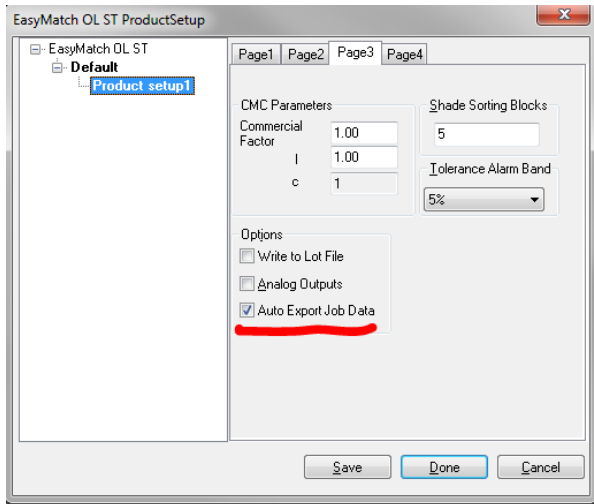


Using Auto Export

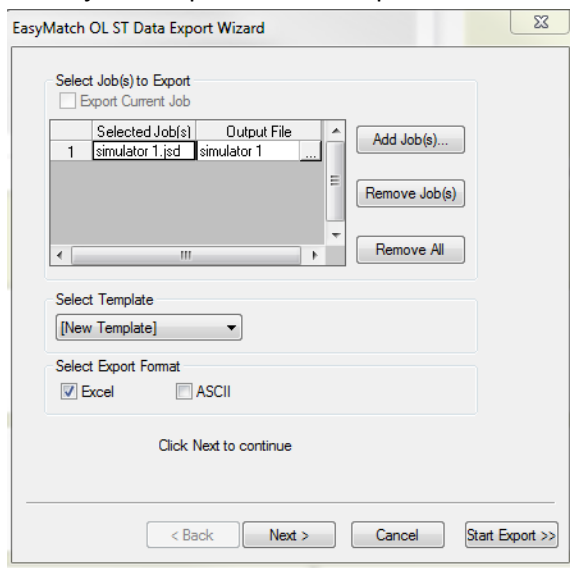
(EasyMatch ST 2.0.6 and above)

Initial Setup

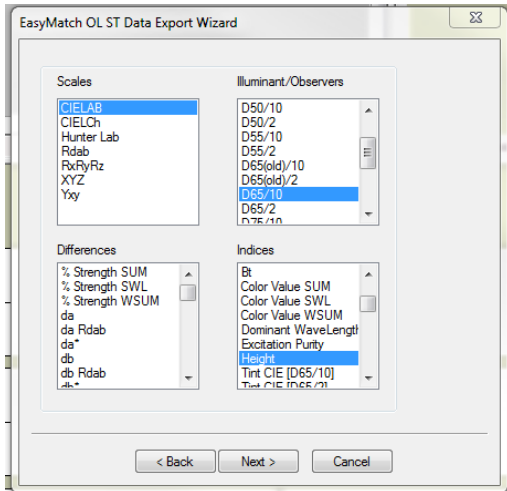
- 1) Close all existing jobs
- 2) Select Run/Product Setup. Select Page 3 and Check box for Auto Export. Repeat for all Setups. Then click Done



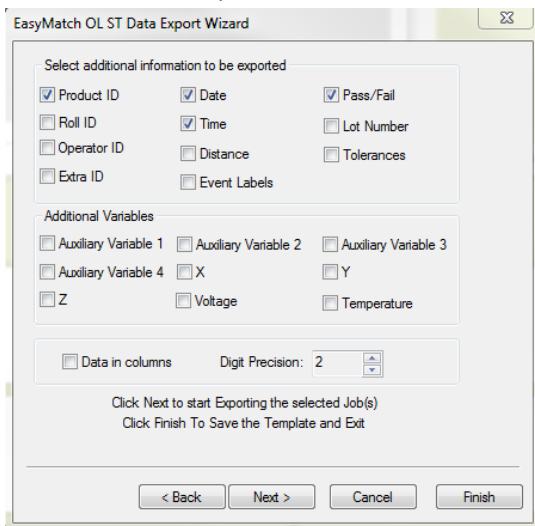
- 3) Select File/Export to Open the Wizard. Click Add Job(s) button and navigate to C:\HunterLab\EasyMatch OL ST Client\EasyMatch OL ST Data Files\Job Files
- 4) Select job to Export and click Open



- 5) Click Next and select Parameters for Export then Click Next.



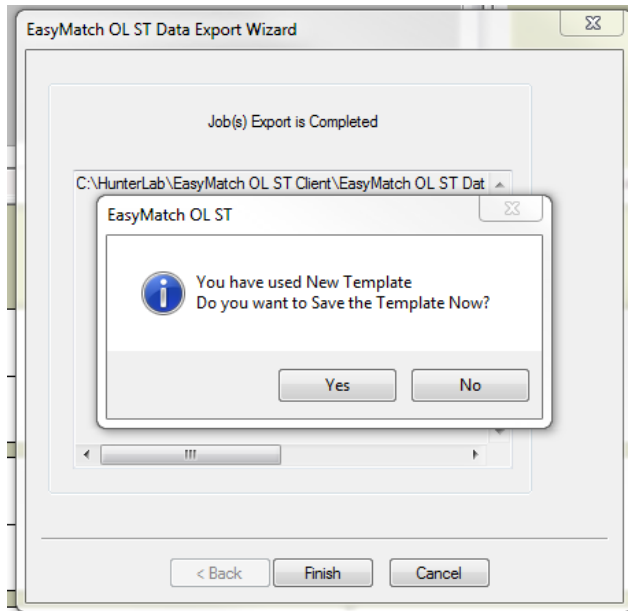
6) Select Fields to Export then click Next



7) An Excel or ASCII file will be Created and Saved with Job Name in

C:\HunterLab\EasyMatch OL ST Client\EasyMatch OL ST Data Files\Exported Files

8) Click Yes to Name and Save the new Template



- 9) Navigate to folder
C:\HunterLab\EasyMatch OL ST Client\EasyMatch OL ST Data Files\Data Export Templates
And Name and Save

- 10) You may now manually Export Files using the File/Export menu and selecting your new template
or Automatically Exporting at the end of a job if Auto Export is selected in the Product Setup for
that Job.