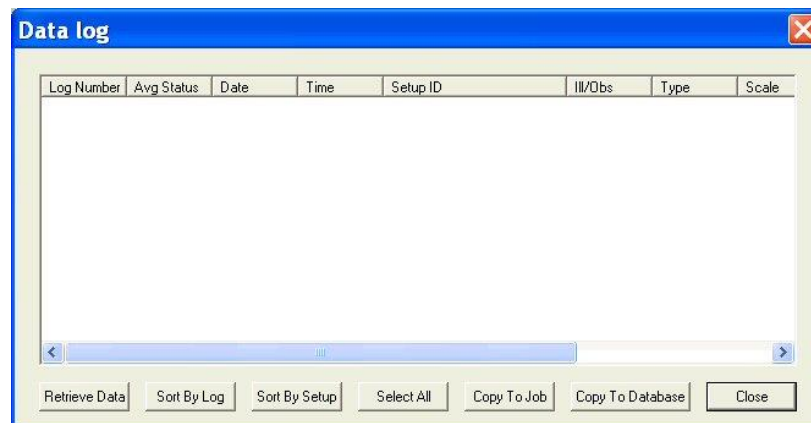


EasyMatch® QC Lesson 7

Sharing Data and Setups with a ColorFlex EZ, or MiniScan EZ

In order to upload samples from your ColorFlex EZ or MiniScan EZ datalog to EasyMatch QC, you must have data saved to the instrument datalog as SPECTRAL data or ABSOLUTE TRISTIMULUS data. See your instrument's User's Guide for information about using a spectral datalog (configured in the Instrument Setup) and measuring absolute data (configured in the Product Setup). When you are ready to upload your data, perform the following steps:

- 1) **Connect the Sensor.** Connect the ColorFlex EZ or MiniScan EZ to your computer and install it in EasyMatch QC. See the Sensor Menu chapter and Chapter 11 for more information.
- 2) **Open an EasyMatch QC job** and configure it as desired. You may modify the views later as long as SPECTRAL or ABSOLUTE TRISTIMULUS data is being uploaded.
- 3) Choose **Import Logged Reads** from the **Sensor** menu. The following screen appears.



- a) Click **Retrieve Data**. The measurements stored in the instrument datalog will be uploaded and displayed on the Data log screen. A status screen will be displayed as the data uploads.

Log Number	Avg Status	Date	Time	Setup ID	Ill/Obs	Type	Scale
001	1/1	14/07/08	14:22	COLORANT STRENGTH	D65/10	SMPL	dLab*
002	1/1	14/07/08	14:22	COLORANT STRENGTH	D65/10	SMPL	dLab*
003	1/1	14/07/08	14:22	COLORANT STRENGTH	D65/10	SMPL	dLab*
004	1/1	24/07/08	14:03	DAYLIGHT COLOR	D65/10	STD	Lab*
005	1/1	24/07/08	14:04	COLORIMETER COLOR	C/2	STD	Lab*

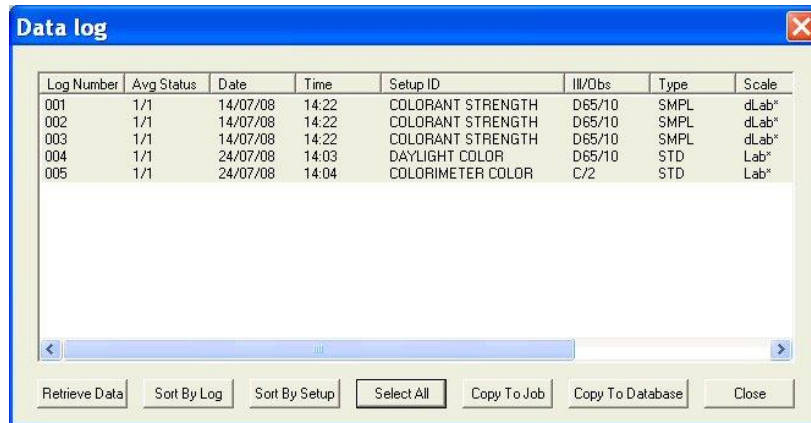
- b) Suppose, after examining the data, you wish to show Log Numbers 003 and 004 in your job. The other data will not be displayed in the job, but you don't mind. Click on 003 and then hold the **Ctrl** key on your keyboard and click on 004 so that those samples are highlighted.

Log Number	Avg Status	Date	Time	Setup ID	Ill/Obs	Type	Scale
001	1/1	14/07/08	14:22	COLORANT STRENGTH	D65/10	SMPL	dLab*
002	1/1	14/07/08	14:22	COLORANT STRENGTH	D65/10	SMPL	dLab*
003	1/1	14/07/08	14:22	COLORANT STRENGTH	D65/10	SMPL	dLab*
004	1/1	24/07/08	14:03	DAYLIGHT COLOR	D65/10	STD	Lab*
005	1/1	24/07/08	14:04	COLORIMETER COLOR	C/2	STD	Lab*

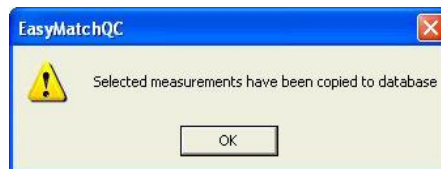
- c) Click **Copy to Job**. These measurements are copied into your job. Standards are copied into the job as standards. Samples are copied as samples, and you are given the opportunity to indicate the standard with which you would like to link each. The Data log screen remains open.

Note: If you attempt to copy a ColorFlex EZ DIFFERENCE TRISTIMULUS sample into the job, the message "Difference data cannot be retrieved from the data log when it is in tristimulus mode" will be received and the sample will not be copied into the job. This is because the software does not know what standard values were used to calculate the sample's difference data.

- d) Suppose you wish to copy all of the measurements into your database for later use. Click **Select All**. All of the measurements will be highlighted.



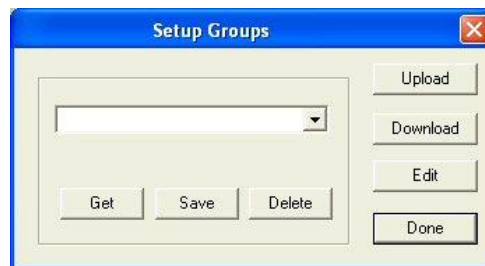
e) Click **Copy to Database**. The measurements are saved in the EasyMatch QC database.



f) Click **Close** to close the Data log screen.

Suppose you then want to modify one of your instrument Product Setups while the instrument is still connected to your computer. Complete the following steps:

1. Select **Configure Setups** from the **Sensor** menu. The following screen appears.



2. Since you wish to edit one setup, click **Edit**. The Product Setup Configuration screen appears.

Product Setup Configuration

Setup Number: (1-99)

Setup ID: **SETUP NUMBER 1** 18 Chars. Max

Average Count: (0-25) 0 = Off

Standard Type: Working

Display Mode: Difference CMC Lc: 2.0

Illuminant/Observer: D65/10 Factor: 1.0

Retrieve

Update Sensor

Read Standard

Recall Standard

Retrieve All

Update All Setups

Color Scale: L*a*b*

L*

a*

b*

Index Scale: None

Difference Scale: L*a*b*

Tolerances: dL* 0.0 = Off

da* 0.0 = Off

db* 0.0 = Off

Difference Index: None

0.0 = Off

OK Cancel

Product Setup Configuration Tool

Setup Number: (1-100)

Setup ID: **SETUP 1** 15 Chars. Max

Standard Type: Physical

Average Count: (1-20) 1 = Off

Retrieve

Retrieve All

Update Sensor

Update All Setups

Read Standard

Recall Standard

View 1 | View 2 | View 3 | View 4 | View 5 | View 6 | View 7 | View 8

Enabled

Display Type: Absolute Scale: L*a*b*

Illuminant/Observer: D65/10 Index: (...)

Shade Blocks: 3 Commercial Factor: 1.00

Lc Ratio: 2.00

Standard Values: + Tolerances: -

L* dL* 0.0 = Off

a* da* 0.0 = Off

b* db* 0.0 = Off

0.0 = Off

Include in Auto Search

OK Cancel

ColorFlex EZ and

MiniScan EZ

- a. The setup you wish to modify is number 10. Click the up arrow next to Setup Number until the number 10 is shown.

Product Setup Configuration

Setup Number: (1-99)

Setup ID: 18 Chars. Max

Average Count: (0-25) 0 = Off

Standard Type:

Display Mode: CMC Lc:

Illuminant/Observer: Factor:

Buttons: Retrieve, Update Sensor, Read Standard, Recall Standard, Retrieve All, Update All Setups

Color Scale:

L* a* b*

Index Scale:

Difference Scale:

Tolerances: dL* 0.0 = Off
 da* 0.0 = Off
 db* 0.0 = Off

Difference Index: 0.0 = Off

Buttons: OK, Cancel

Product Setup Configuration Tool

Setup Number: (1-100)

Setup ID: 15 Chars. Max

Standard Type:

Average Count: (1-20) 1 = Off

Buttons: Retrieve, Retrieve All, Update Sensor, Update All Setups, Read Standard, Recall Standard

View 1 | View 2 | View 3 | View 4 | View 5 | View 6 | View 7 | View 8

Enabled

Display Type: Scale:

Illuminant/Observer: Index:

Shade Blocks: Commercial Factor: Lc Ratio:

Standard Values: + Tolerances: -

L* <input type="text" value="0.00"/>	dL* <input type="text" value="0.00"/>	<input type="text" value="0.00"/>	0.0 = Off
a* <input type="text" value="0.00"/>	da* <input type="text" value="0.00"/>	<input type="text" value="0.00"/>	0.0 = Off
b* <input type="text" value="0.00"/>	db* <input type="text" value="0.00"/>	<input type="text" value="0.00"/>	0.0 = Off
	<input type="text" value="0.00"/>	<input type="text" value="0.00"/>	0.0 = Off

Include in Auto Search

Buttons: OK, Cancel

ColorFlex EZ and

MiniScan EZ

- b. Click the **Retrieve** button. The parameters that are currently stored in your instrument for Setup Number 10 are brought into the Product Setup Configuration screen.

Product Setup Configuration

Setup Number: (1-99)

Setup ID: **SETUP NUMBER 10** 18 Chars. Max

Average Count: (0-25) 0 = Off

Standard Type: Working

Display Mode: Difference CMC Lc: 2.0

Illuminant/Observer: D65/10 Factor: 1.0

Retrieve

Update Sensor

Read Standard

Recall Standard

Retrieve All

Update All Setups

Color Scale: L*a*b*

L*

a*

b*

Index Scale: None

Difference Scale: L*a*b*

Tolerances: dL* 0.0 = Off

da* 0.0 = Off

db* 0.0 = Off

Difference Index: None

0.0 = Off

OK Cancel

Product Setup Configuration Tool

Setup Number: (1-100)

Setup ID: **SETUP 10** 15 Chars. Max

Standard Type: Physical

Average Count: (1-20) 1 = Off

Retrieve

Retrieve All

Update Sensor

Update All Setups

Read Standard

Recall Standard

View 1 | View 2 | View 3 | View 4 | View 5 | View 6 | View 7 | View 8

Enabled

Display Type: Absolute Scale: L*a*b*

Illuminant/Observer: D65/10 Index: (...)

Shade Blocks: 3 Commercial Factor: 1.00

Lc Ratio: 2.00

Standard Values: + Tolerances: -

L* dL* 0.0 = Off

a* da* 0.0 = Off

b* db* 0.0 = Off

0.0 = Off

Include in Auto Search

OK

Cancel

ColorFlex EZ and

MiniScan EZ

- c. Highlight the ID currently shown in the Setup ID box and replace that ID by typing "LESSON 7."

Product Setup Configuration

Setup Number: 10 (1-99)

Setup ID: LESSON 7 18 Chars. Max

Average Count: 0 (0-25) 0 = Off

Standard Type: Working

Display Mode: Difference CMC Lc: 2.0

Illuminant/Observer: D65/10 Factor: 1.0

Buttons: Retrieve, Update Sensor, Read Standard, Recall Standard, Retrieve All, Update All Setups

Color Scale: L*a*b*

L* 0.00, a* 0.00, b* 0.00

Index Scale: None 0.00

Difference Scale: L*a*b*

Tolerances: dL* 0.0 0.0 = Off, da* 0.0 0.0 = Off, db* 0.0 0.0 = Off

Difference Index: None 0.00 0.0 = Off

OK Cancel

Product Setup Configuration Tool

Setup Number: 10 (1-100)

Setup ID: LESSON 7 15 Chars. Max

Standard Type: Physical

Average Count: 1 (1-20) 1 = Off

Buttons: Retrieve, Retrieve All, Update Sensor, Update All Setups, Read Standard, Recall Standard

View 1 | View 2 | View 3 | View 4 | View 5 | View 6 | View 7 | View 8

Enabled

Display Type: Absolute Scale: L*a*b*

Illuminant/Observer: D65/10 Index: (...)

Shade Blocks: 3 Commercial Factor: 1.00

l:c Ratio: 2.00

Standard Values: + Tolerances: -

L*	0.00	dL*	0.00	0.00	0.0 = Off
a*	0.00	da*	0.00	0.00	0.0 = Off
b*	0.00	db*	0.00	0.00	0.0 = Off
			0.00	0.00	0.0 = Off

Include in Auto Search

OK Cancel

ColorFlex EZ and

MiniScan EZ

- d. Select YI (YIE for MiniScan EZ) from the drop-down box next to Index Scale.

Product Setup Configuration

Setup Number: 10 (1-99)

Setup ID: LESSON 7 18 Chars. Max

Average Count: 0 (0-25) 0 = Off

Standard Type: Working

Display Mode: Difference CMC Lc: 2.0

Illuminant/Observer: D65/10 Factor: 1.0

Color Scale: L*a*b*

L* 0.00

a* 0.00

b* 0.00

Index Scale: YI

YI 0.00

Difference Scale: L*a*b*

Tolerances: dL* 0.0 0.0 = Off

da* 0.0 0.0 = Off

db* 0.0 0.0 = Off

Difference Index: dYI

dYI 0.0 0.0 = Off

OK Cancel

Product Setup Configuration Tool

Setup Number: 10 (1-100)

Setup ID: LESSON 7 15 Chars. Max

Standard Type: Physical

Average Count: 1 (1-20) 1 = Off

View 1 | View 2 | View 3 | View 4 | View 5 | View 6 | View 7 | View 8

Enabled

Display Type: Absolute Scale: L*a*b*

Illuminant/Observer: D65/10 Index: YIE

Shade Blocks: 3 Commercial Factor: 1.00

I:c Ratio: 2.00

Standard Values: + Tolerances: -

L* 0.00 dL* 0.00 0.00 0.0 = Off

a* 0.00 da* 0.00 0.00 0.0 = Off

b* 0.00 db* 0.00 0.00 0.0 = Off

dYIE 0.00 0.00 0.0 = Off

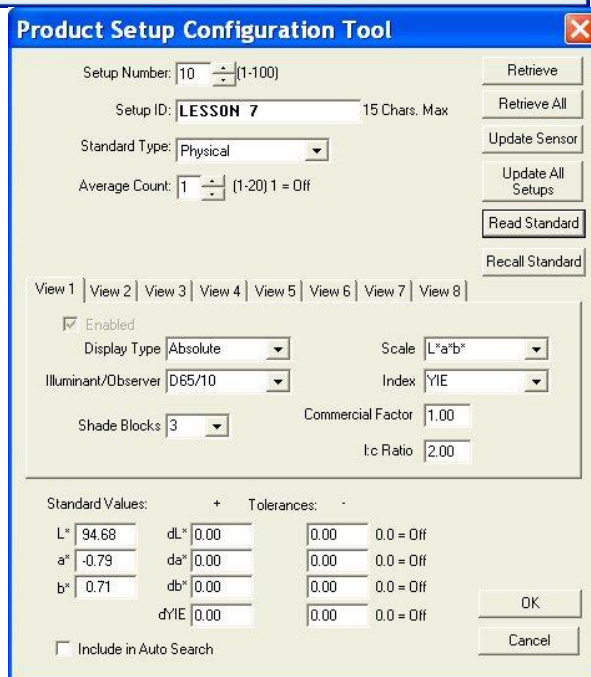
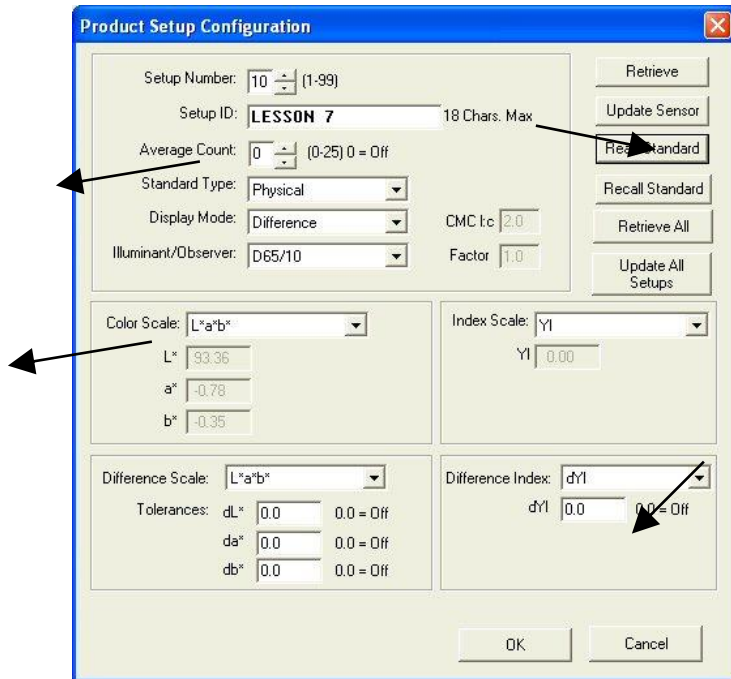
Include in Auto Search

OK Cancel

ColorFlex EZ and

MiniScan EZ

- e. Select Physical from the drop-down box next to Standard Type. Center your product standard at the sample port and click the **Read Standard** button. The standard is measured and its values placed in the boxes beneath Color Scale.



ColorFlex EZ and

MiniScan EZ

- f. Your setup has now been modified as desired on your computer screen. Click the **Update Sensor** button. The altered setup is sent to your instrument. Observe the change on your instrument's display.
- g. Click **OK** to exit the Product Setup Configuration screen and then **Done** to exit the Setup Groups screen.