

Jobs: Data Management

The Data Management contains these features:

- **Recall** the measurements from the database.
- **Import** Jobs, Standards and Workspaces from a USB flash drive.
- **Export** Jobs, Standards and Workspaces to a USB flash drive.
- **Delete** Jobs, Standards or Workspaces
- **Email** the selected Jobs
- **Backup** the Job Files and Database into a USB Flash drive.
- **Restore** the Job files and Database from a USB Flash drive.

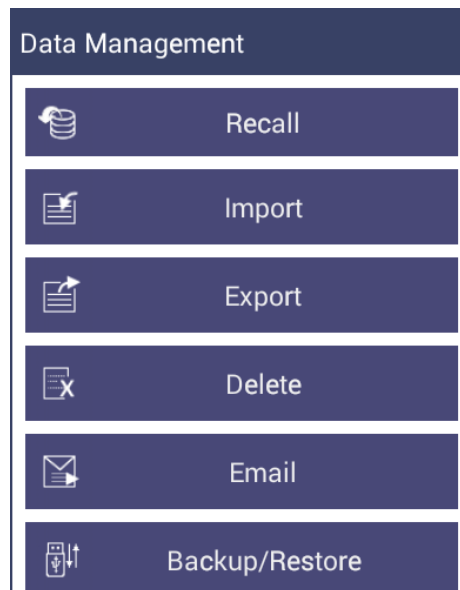


Figure. Data Management Menu

For more information please select the menu item of interest.

Recall Data

Recall measurements that have been stored to a job:

The database contains the standards and sample measurements saved in a Job along with the sensor information. The saved measurements are also associated to respective Workspace and Job.

This feature enables the user to recall the Standard and Sample(s) stored in the Database into the current running Job.

Click the **Recall** option in Data Management, a dialog will be displayed where the user can recall the measurements from the database by selecting the **Type**:

- **Show Standards associated to a Category**

When this option is selected, the standards list is filled with the standards associated with the selected Category (i.e. like Pale Ale) from the Select Standard Category list. All the matching samples are filled into the sample list. To narrow the list, the user can select the samples only associated with the selected standard.

- **Show all the measurements in selected Job**

When this option is selected, the standards list is filled with the standard contained in the selected Job from the Select Job drop down list. All the samples are filled into the sample list.

- **Show the Standards and Samples in the Current Workspace**

When this option is selected, the standards list is filled with the standards associated to the current workspace. All samples are filled into the sample list. To narrow the list, the user can select the samples only associated with the selected standard.

- **Show the Imported Standards**

When this option is selected, the standards list is only filled with the standards imported into the database.

After selecting the measurements click **Recall** to recall them into the active Job.

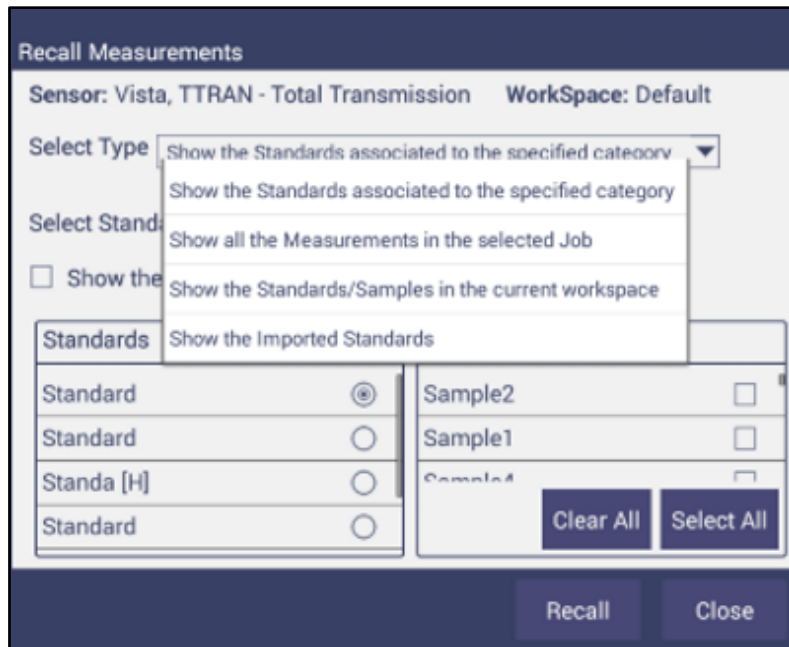


Figure. Recall Measurements

Data Import

This feature allows the user to import Job, Standard, and Workspace from a USB flash drive into the instrument. Data can be one file, multiple files or all files. Please note that all selected files should be in the same file path location

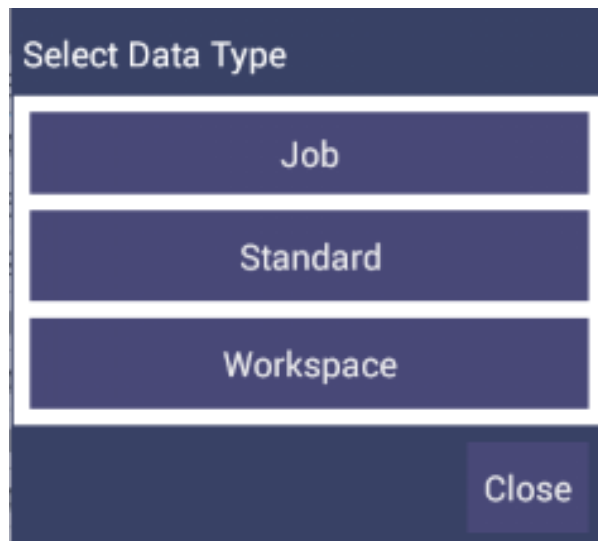


Figure. Import Data Type

- **Import Job**

This option allows the user to browse and select Job files from the USB flash drive and import into the instrument.

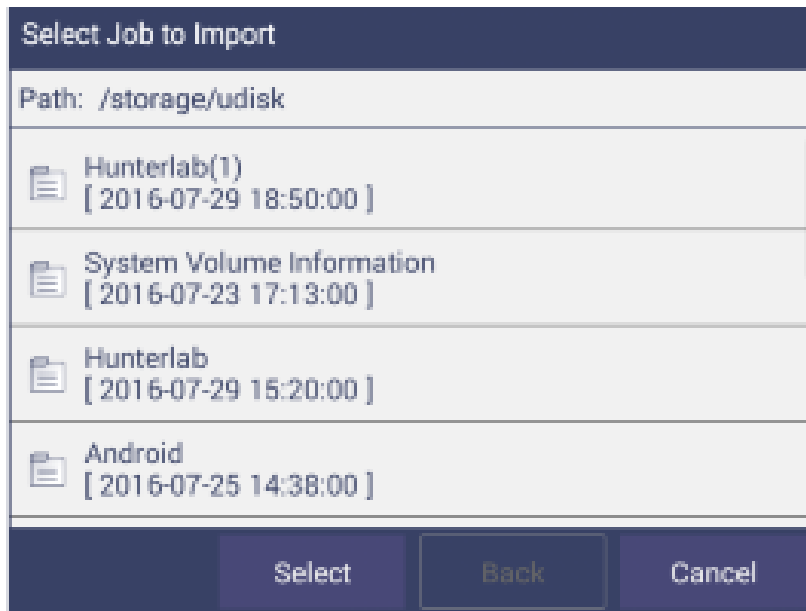
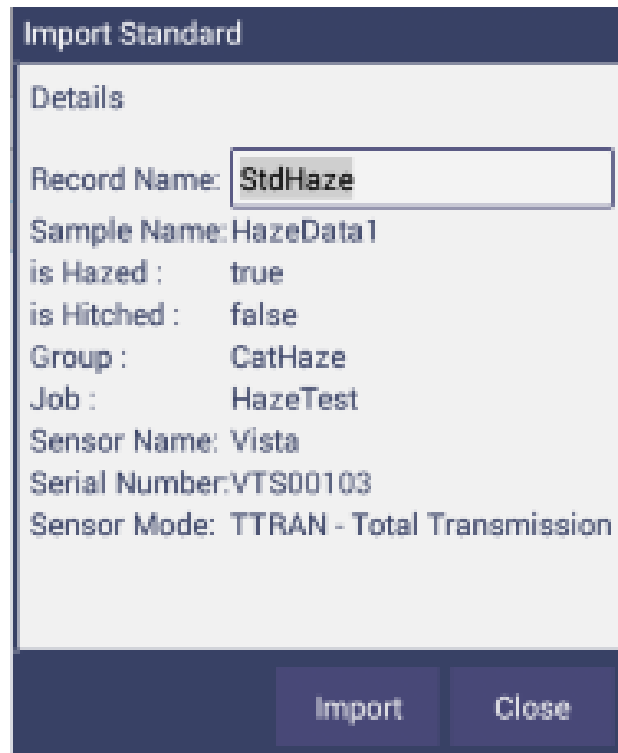


Figure. Import Job

- **Import Standard**

This option allows the user to browse and select Standard files (.std) from the USB flash drive and import into the database.



The screenshot shows a dialog box titled "Import Standard" with a "Details" section. The "Record Name" field is highlighted with a text box containing "StdHaze". Other fields include "Sample Name: HazeData 1", "is Hazed : true", "is Hitched : false", "Group : CatHaze", "Job : HazeTest", "Sensor Name: Vista", "Serial Number: VTS00103", and "Sensor Mode: TTRAN - Total Transmission". At the bottom, there are "Import" and "Close" buttons.

Field	Value
Record Name	StdHaze
Sample Name	HazeData 1
is Hazed	true
is Hitched	false
Group	CatHaze
Job	HazeTest
Sensor Name	Vista
Serial Number	VTS00103
Sensor Mode	TTRAN - Total Transmission

Figure. Import Standard

- **Import Workspace**

This option allows the user to browse and select Workspace files (extension .wsp) from the USB flash drive and import into the database.

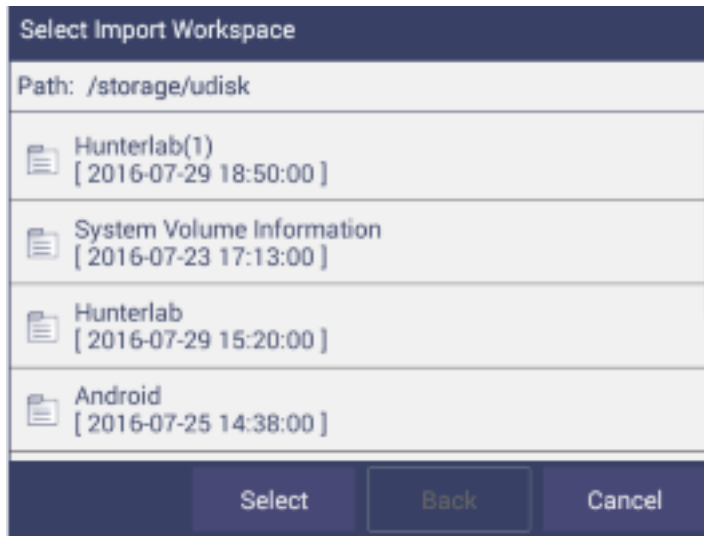


Figure. Import Workspace

Note: To use the above functions, a USB flash drive must be present in the port.

Export

This feature allows the user to export Job, Standard, and Workspace from the instrument into a USB flash drive. Data can be one file, multiple files or all files. Please note that all selected files should be in the same file path location.

- **Export Job:** This option allows the user to browse and select existing Job files (.ezm) or the current active Job data and copy into a USB flash drive either in **CSV** or **EZM** file format. While exporting, the current active Workspace settings can be applied.

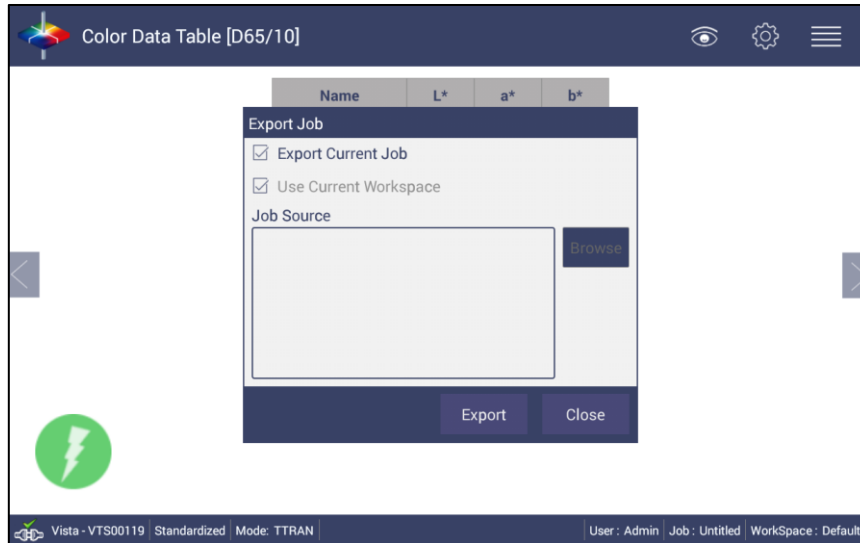


Figure. Export Current Job

- **Export Standard**

This option allows the user to browse and select existing Standards in the database and copy into the USB flash drive as a file (.std).

- **Export Workspace**

This option allows the user to browse and select existing Workspaces in the database and copy into the USB flash drive as a file (.wsp).

To use the above functions, a USB flash drive must be present in the port.

Delete Job, Standard, or Workspace

From **Jobs: Data Management: Delete**, Jobs, Standards or Workspaces can be deleted. Data can be one file, multiple files or all files. Please note that all selected files should be in the same file path location.

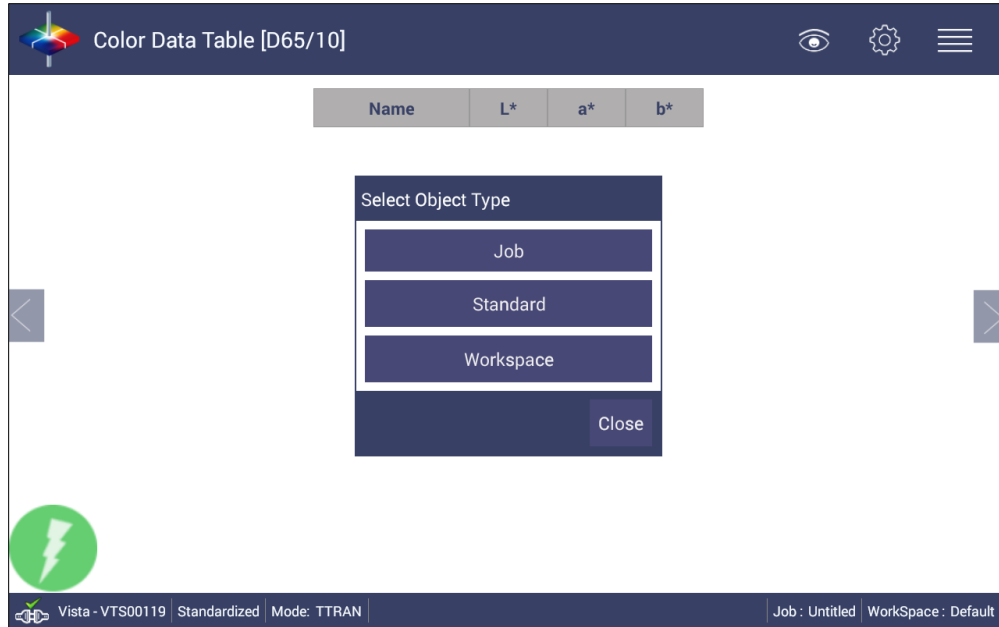


Figure. Deleting a Job, Standard or Workspace

Email Job

- Saved jobs can be emailed if there is an active internet connection. Attach one job, multiple jobs or all jobs. Please note that all selected files should be in the same file path location. When the **Email** option is clicked, the following screen is shown prompting the user to browse and select a user and enters the recipient mail address.

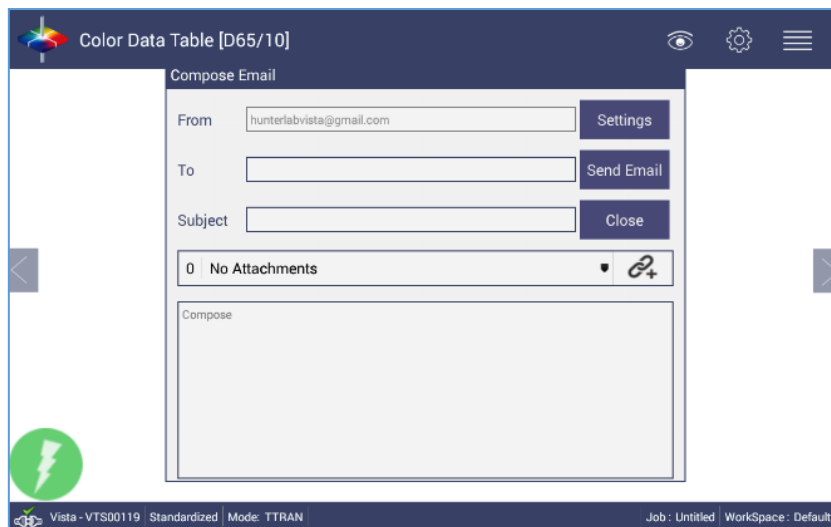


Figure. Enter an Address to Email a Job

- Click the **Settings** button to configure the SMTP mail server configuration (Port, Server) as shown below. The mail settings configuration is mandatory to enable the mail job feature in the application.



Figure. Enter SMTP Mail Server Information

- Click the **Send** button to complete the Email operation.
-