

## Creating and Configuring a SQL Database

This appendix describes how to create and configure a SQL database for use with EasyMatch OL ST. A working knowledge of SQL server is recommended for performing these steps. A copy of SQL Server (Microsoft SQL Server is typical) should be installed first followed by EasyMatch OL ST, as described in the EasyMatch OL ST Installation Guide

1. Create new database named as “EZMOL-STHT”
2. In SQL Server, select **File > Open** and choose to open the script file from the location

**For 32 bit OS:** “C:\Program Files\HunterLab\EasyMatch OL ST Client\Database Script”

(or)

**For 64 bit OS:** “C:\Program Files (x86)\HunterLab\EasyMatch OL ST Client\Database Script”

This is the location of the file if you installed EasyMatch ST to the default folder. If you installed elsewhere, you will find the SQL Database Script subfolder in your installation folder.

3. Execute the ‘EasyMatch OL SpectraTrend DB Script.sql’ script file and the EZMQC SQL database will be created.
4. You can use the SQL Server to view this database and see that tables have been created within it.
5. In the **Tree View**, expand the **Security Branch**.
6. Right-click on **Security > Logins** and choose **New Login**.
7. Change Default Database to EZMOL-STHT and do User Mapping to set each User with data read and write roles for the EZMOL-STHT SQL database.

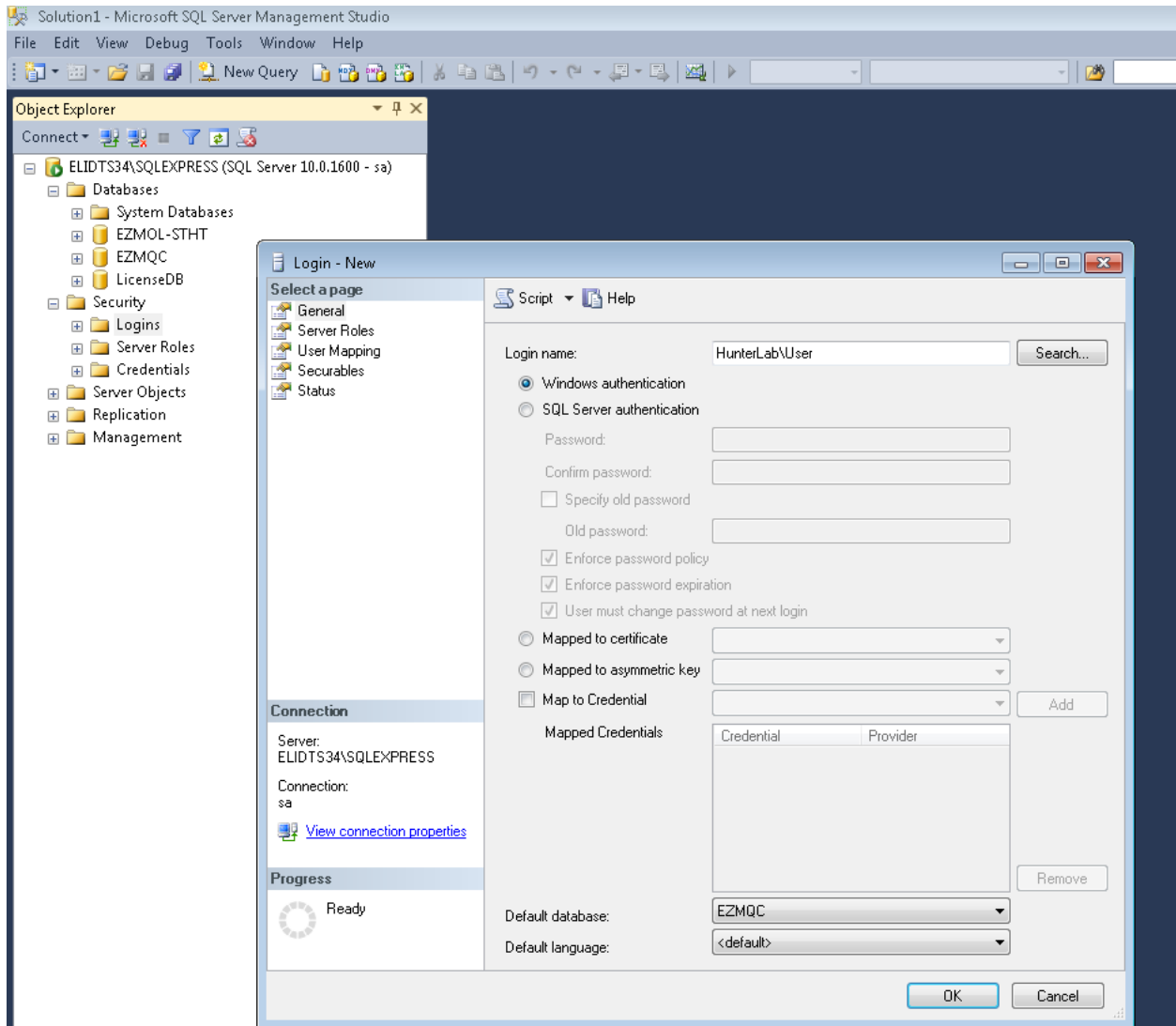


Figure 1. Creating an SQL Database

8. Close SQL Server.
9. On the computer where EasyMatch ST will be run, open EasyMatch ST software
10. Select **System Configuration > Options**, and then **Data Storage**. The Data Storage Screen appears.
11. Select the **SQL Server**, enter the server and database name (EZMOL-STHT). Click **OK**.

Data Storage

Server Configuration

EasyMatch OL ST Server Name  Test Connection

DataBase  File System

Default File Path

C:\HunterLab\EasyMatch OL ST Client\EasyMatch OL ST Data Files\ Browse

Database Configuration

Database Type MS SQL Server

DB Server Name

Database Name  Browse

Authentication Mode Windows Authentication

User Name

Password

OK Cancel

Figure 2. SQL Database Storage

When the SQL Database Server is selected, a new option is provided to select the Authentication type as 'Windows' or 'SQL server' in the Data Storage Dialog. If 'Windows' is selected, the current system login in user credentials will be used to login to the SQL server, then there is no need to specify the user name and password. When 'SQL Server' option is selected, the database server credentials need to be specified.

12. Restart EasyMatch ST and then SQL Server Database is ready for use.

\*\*\*\*\*