

Purpose

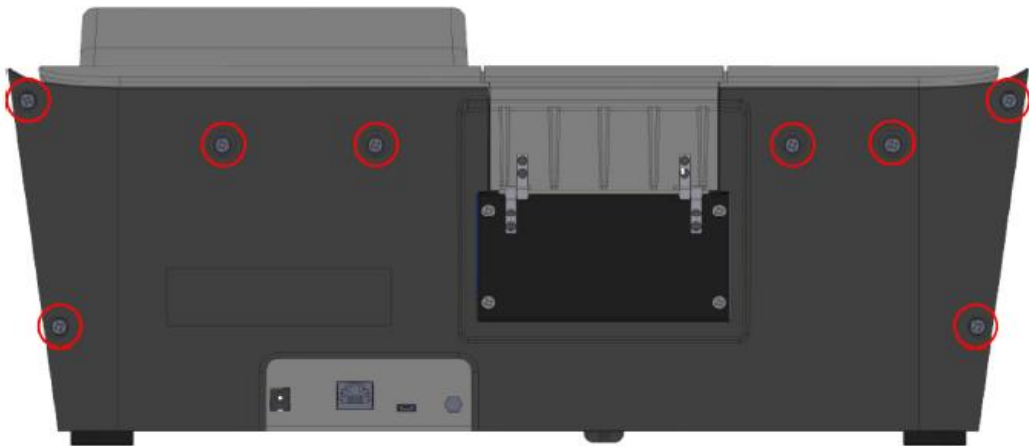
The purpose of this procedure is to provide the guidelines to upgrade a Vista Spectrophotometer to carry footswitch capabilities.

Tools & Reference Documents Needed

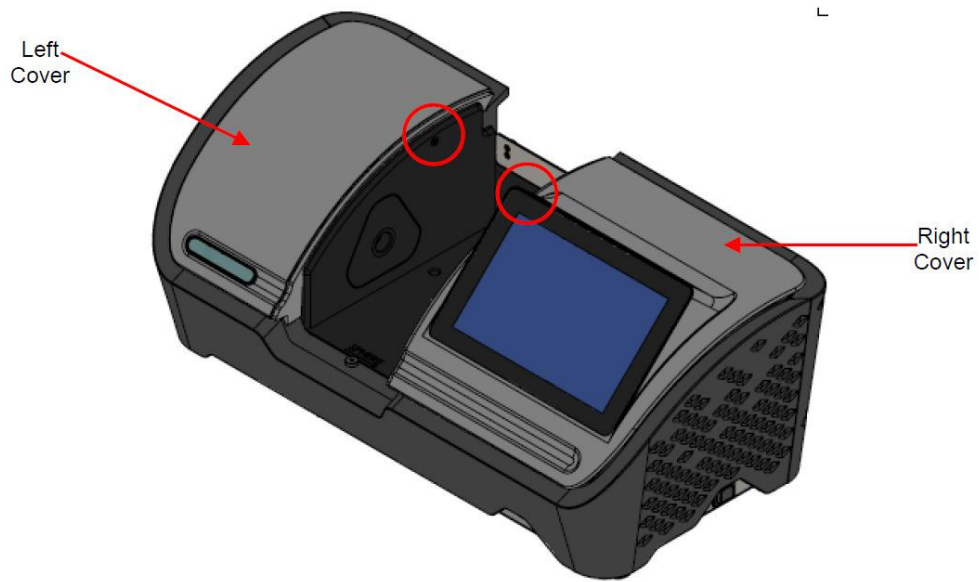
- L02-1019-658 "KIT, VISTA FOOTSWITCH UPGRADE"
- D02-1019-167 "ASSY, POWER I/O BOARD, VISTA GEN 2"
- D02-1019-174 "CABLE, FOOTSWITCH, I/O BD TO SBC, VISTA"
- D04-1019-178 "BRACKET, REAR I/O PCB, GEN2"
- L02-1018-766 "PROGRAMMED, VISTA MICRO SD CARD"
- SCREWDRIVER PHILLIPS #3

Procedure

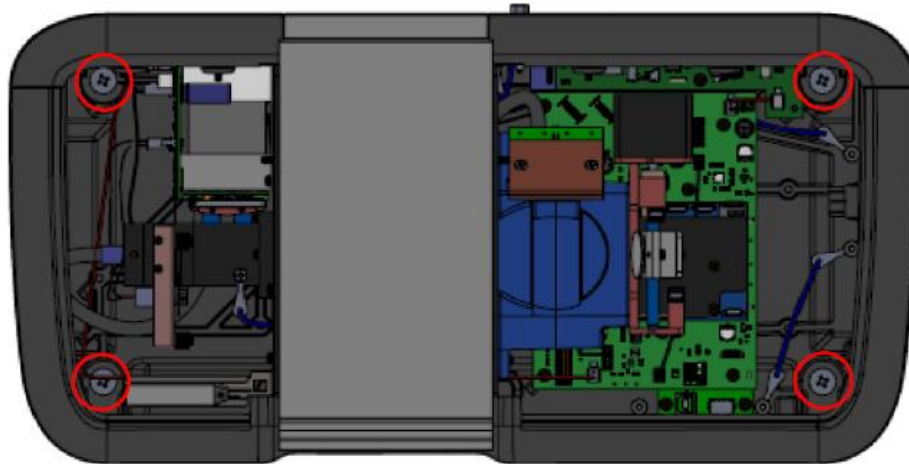
1. Remove the 8 screws from the rear of the instrument.



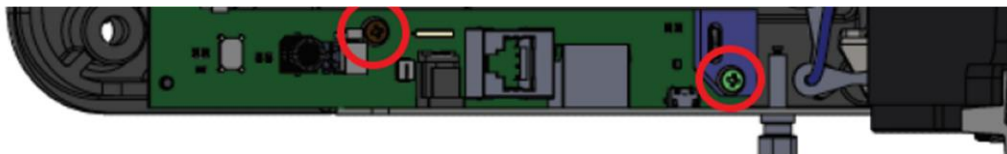
2. Remove the two screws from inside the Transmission Compartment that hold the Top Right and Left covers.



3. Remove the Top Right and Left covers.
4. Disconnect the Display connector from the Top Right cover by pulling on the black cord that is connected on each end of the Display connector.



5. Remove the Front and Rear covers by removing the 4 screws inside the instrument as shown below.

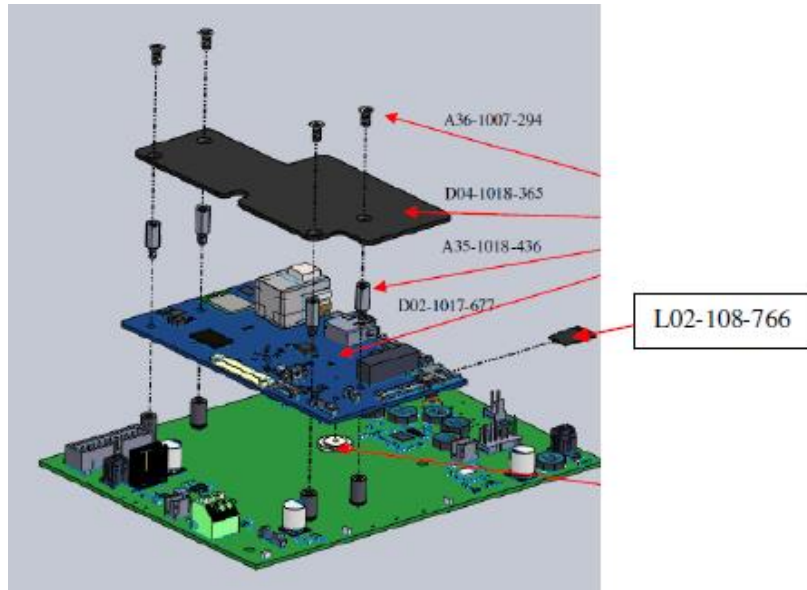


6. Disconnect all connections from the existing "Power I/O board" D02-1017-219. Remove the 2 screws from the board along with the USB Strain Relief as shown below and remove from instrument.



7. Remove the 2 Hex Nuts from Ground Harnesses and Hex Head Binding Post as shown below.
8. Remove the existing "Rear I/O Bracket" D04-1017-335 by lowering it from bottom of the instrument base.
9. Install the new "Rear I/O Bracket" D04-1019-178 by placing it under the instrument base and inserting it the studs through the corresponding holes.
10. Install Ground Harnesses using 2 Hex Nuts and Hex Head Binding Post from before.
11. Install new "Power I/O Board" D02-1019-167 into position with existing hardware.
12. Install new harness D02-1019-174 from "J8" connector of new I/O board D02-1019-167 to "J2" connector of SBC board D02-1017-677.
13. Reconnect all cables on "Power I/O Board D02-1019-167.
14. Install front, rear, top left, and top right covers.

15. Replace the Micro SD card from the SBC board with L02-1018-766 Revision H or greater.



16. Test foot switch

- a. Insert FootSwitch into newly installed I/O board port on the back of the unit.
- b. Plug unit into power outlet.
- c. Turn on unit and follow set up procedures for usage of footswitch.