

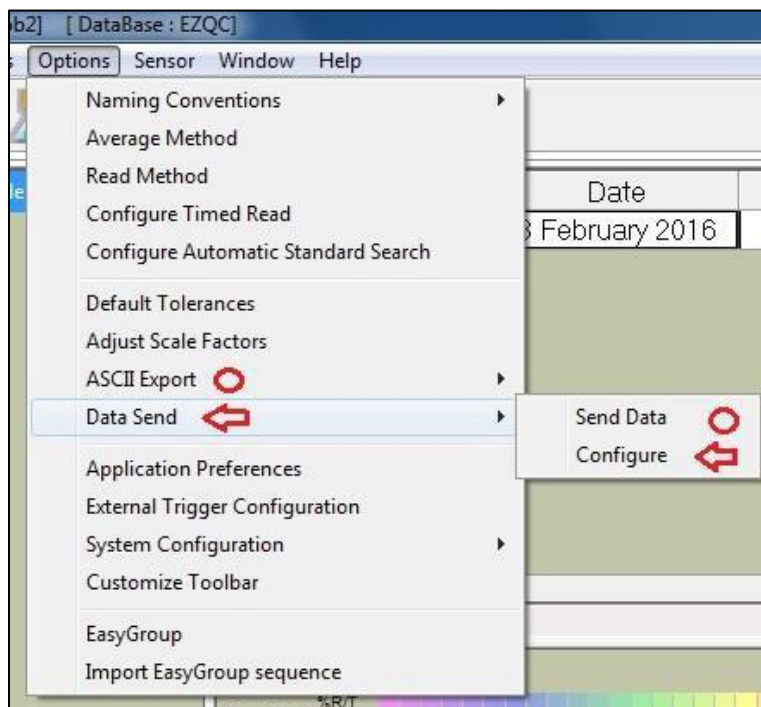
EasyMatch QC: How to Data Send to COM Port

Please make sure your version of EasyMatch QC (go to Help/About to check) is 4.87 or higher. If not, please contact HunterLab by going to support.hunterlab.com

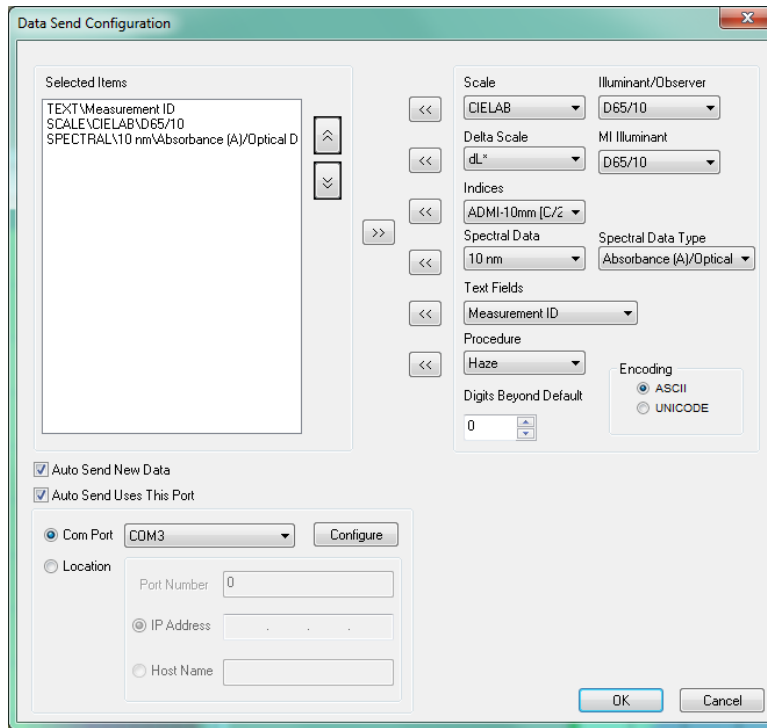
Setup for Sensor PC connected to HunterLab sensor

Start EasyMatch QC and standardize the sensor successfully so that it is ready for color measurement. To configure the Data Send feature in EasyMatch QC, go to **OPTIONS > DATA SEND**. ASCII Export uses a similar process as Data Send but sends the data record to a file. Data Send sends the data record to a COM port on the Sensor PC or to the IP address of the Remote PC.

Selecting **DATA SEND > SEND DATA** allows the User to manually send a number of data records manually after selecting them as a group in the Job Tree of the current active Job. The format of the data record is set by **DATA SEND > CONFIGURE**.



Data Send Configuration to Defined Data Record

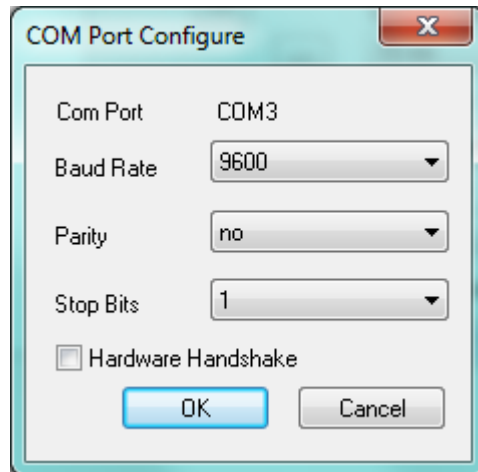


Select the color values on the right that you want to send using the double left arrows. adjust the order of the information you want to send. Typically the record would be sent as ASCII character encoding for European languages and UNICODE if sending graphic languages such as Japanese or Chinese. The record will be sent using TCP/IP protocol.

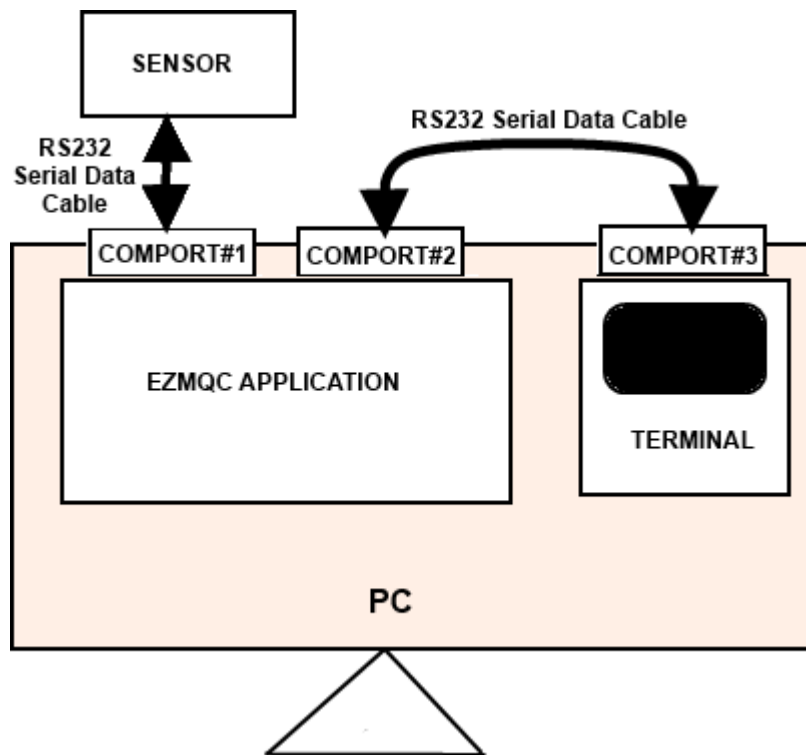
Select **AUTO SEND NEW DATA** to send data records from this point forward. If you want to turn off the Data Send feature temporarily, you can uncheck this box in the future leaving everything else configured for a fast re-start.

Select "**AUTO SEND USES THIS PORT**" and select "**COM PORT**" to send it to a COM port on the computer. Select the appropriate COM port available (please note it cannot be the same COM port that your instrument is currently connected to.)

Select the configure button to set the COM port configuration.



Notes on COM Port and Computer Setup



The configuration would be

- a) Sensor is connected to COM PORT#1
- b) EasyMatch QC uses COM PORT#2 for Data Send
- c) Hyper Terminal or other Application uses COM PORT#3

Also, the COM PORT#2 and COM PORT#3 should be connected through a RS232 data Cable.

The Instrument can be connected to any COM port (does not have to be COM Port #1 which is typically a serial port). You can use a USB port (say COMN 3 – 9) by attaching a USB-to-Serial converter cable on the serial cable that comes with the instrument. Most instrument communications are serial only.

Some programs such as HyperTerminal are a serial only communications tool and must be connected to a serial port on the PC.

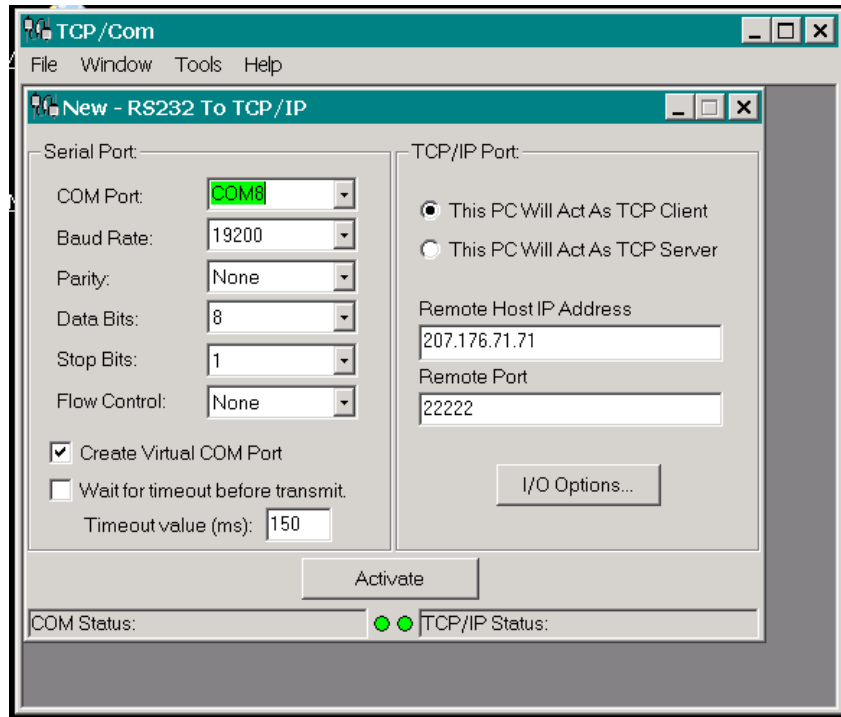
EasyMatch QC Data Send can send out serial data to any active serial communications port.

If you are verifying the Easymatch QC Data Send feature using a HyperTerminal program installed on the PC, it must use a serial port of its own. This means that there must be three serial COM ports on the PC – one for the instrument; one for Easymatch QC Data Send and one for HyperTerminal all of which use serial protocols. There also must be a physical RS232 serial cable connecting the Easymatch QC DataSend and HyperTerminal COM ports (COM 2 to COM 3 in graphic above).

Alternative Arrangements with using HyperTerminal where 3 serial COM ports are not available on the PC:

- Connect instrument to a USB port for sensor operation using a USB-to-Serial adapter on the PC end of the instrument RS232 serial communications cable. Select **SENSOR > INSTALL-CONFIGURE** to set EasyMatch QC communications with the instrument using a USB port (typically PC COM Port# 3 – 9).
- Put HyperTerminal on a separate laptop set to the laptop COM 1 serial port and run a physical RS232 serial cable to a serial port on the PC (typically PC COM Port #1).
- Put HyperTerminal on a separate laptop set to the laptop COM 1 serial port and run a physical RS232 serial cable with a USB-to-Serial converter to a USB port on the PC (typically PC COM Port #3 - 9).
- Put HyperTerminal on the PC connected to a RS232 serial cable with USB-to-Serial adapters on both ends of the serial cable. Easymatch QC DataSend would use a separate USB-Serial port (typically PC COM Port #3 - 9) separate from the USB-Serial port that HyperTerminal is using. The communications in all cases is still serial.

Alternative to using HyperTerminal is to create a virtual Serial Communications using a TCP emulator that can be run remotely.



- The COM port (typically 3 – 10) is the COM port assigned to the Virtual Serial Port where EasyMatch QC Data Send is directed to send out data. The communications parameters can be anything reasonable such as those listed above.
- The Remote Host Address is the IP address of the Remote PC where TCP Emulator program is resident. Run ipconfig in DOS boxes to determine.
- The Remote Port can be set to any number from 1024 to 65000.