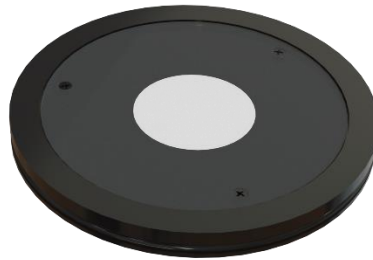




## Port Insert with Polycarbonate for ColorFlex EZ

**Instrument:** ColorFlex EZ 45/0

**Description:** This CMR provides a custom port insert to be used with the ColorFlex 45/0. This insert has a 1.25 in diameter opening covered with polycarbonate and used to protect the interior of the instrument from airborne particles and samples. Two polycarbonate inserts are also included as replacements.



### Installation:

To install the new port plate cover, remove the standard port plate and replace it with the new port plate insert. Make sure that the flat portion of the insert is facing outward with the beveled toward the interior of the interior of the sensor.

To replace the polycarbonate cover, remove the three screws and remove the cover, insert the new cover, and replace the three screws. Do not over tighten the screws. Clean both sides of the new cover using glass cleaner and a non-abrasive cotton or paper towel.

To clean both sides of the cover, use a non-abrasive cotton or paper towel and isopropyl alcohol or any optical cleaner.



**Operation:**

Standardize the instrument with the polycarbonate insert in place, then measure your samples. Check measurements of the green and white tile and perform diagnostics without the polycarbonate cover. Difference measurements using the polycarbonate cover will be more accurate than absolute measurements.