

Addendum to EasyMatch QC User's Manual

Description

CMR 2908 provides a custom ID and read sequence for EasyMatch QC Versions 3.35 and higher. This feature allows you to set up and read a sequence of samples with prompting for each individual sample and to create a personalized sample ID for each reading in the sequence.

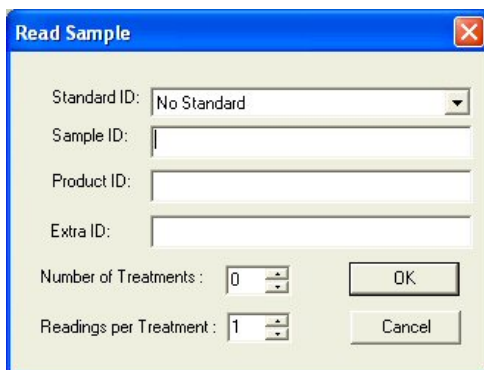
Installation

Install the software as described in the EasyMatch QC Installation Guide. Before opening the software, install the special hardware key provided. The hardware key activates the special features.

Operation

Operate the software as described in the User's Manual with the following modifications:

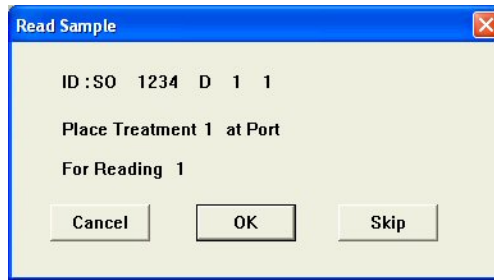
When a sample reading is initiated using the **Read Sample** command in the **Measurements** menu, the **F3** function key, or the **Read a new Sample** button on the toolbar, a screen similar to the following appears:



The screenshot shows a dialog box titled "Read Sample". It contains the following fields and controls:

- Standard ID: A dropdown menu with "No Standard" selected.
- Sample ID: An empty text input field.
- Product ID: An empty text input field.
- Extra ID: An empty text input field.
- Number of Treatments: A spinner box set to 0.
- Readings per Treatment: A spinner box set to 1.
- OK and Cancel buttons.

The Standard ID, Sample ID, Product ID, and Extra ID fields may be filled manually or using the normal Naming Conventions functions. Also indicate the number of treatments to be read (between 1 and 99) and the number of replicates per sample (between 1 and 25). When all fields are set as desired, click **OK**. A prompt appears for placement of the first treatment and replicate at the port.



Click **OK** and then the sample is read. Select **Skip** and the reading will be skipped and the next prompt in the series will be displayed. Select **Cancel** to exit the reading sequence. When this function is in use, the macro/read button on the sensor or the foot switch may be used in lieu of clicking **OK**.

The ID is automatically assigned to each reading in the format “Sample ID\$Product ID\$Extra ID\$T\$R\$N/W,” where \$ is the delimiter chosen for the ASCII Export feature, T is the treatment number, R is the replicate number, and N/W is “N” for the reading with the UV filter in the In/Excluded position and “W” for readings with the UV filter in all other positions.

				L*	a*	b*	dE*		
SO	1234	D	1	1	W	94.03	-0.53	1.63	94.05
SO	1234	D	1	1	N	94.03	-0.53	1.63	94.05

Navigation icons: Home, Left, Right, End

Footer: D65/10 / F02/10 / A/10