

Addendum to EasyMatch QC User's Manual

Description

This modification allows operators to use both the Averaging and Multi-Mode modules concurrently in EasyMatch QC with any HunterLab sensor that supports the Multi-Mode feature.

Installation

Follow the Installation Guide to install the EasyMatch QC software version 4.21 and higher that supports this CMR. A hardware key programmed to support this CMR must be installed in a USB port on the PC.

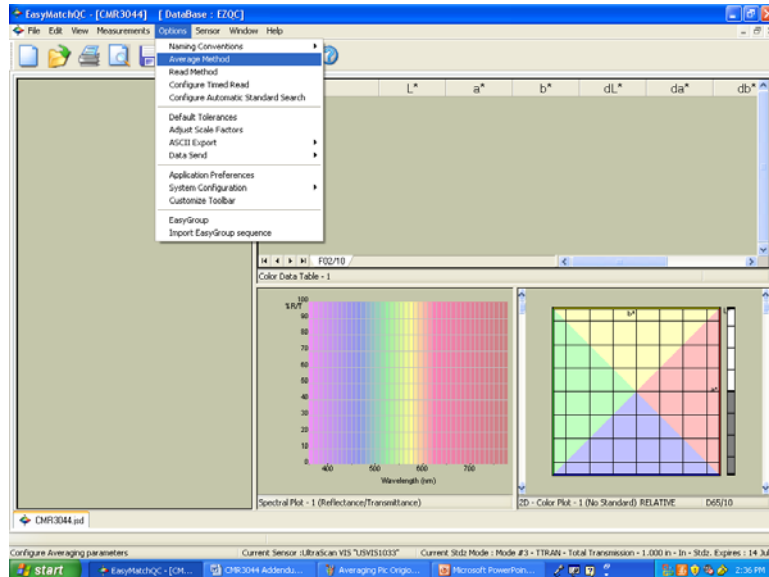
Operation

A Multi-Mode measurements involves multiple readings based on any combination of motorized standardization modes that can be measured without intervention of the operator. Typical Multi-Mode measurements are Specular Included/Excluded; UV Filter Calibrated (UV included)/IN (UV excluded) and LAV-Larger Area of View/SAV Small Area of View.

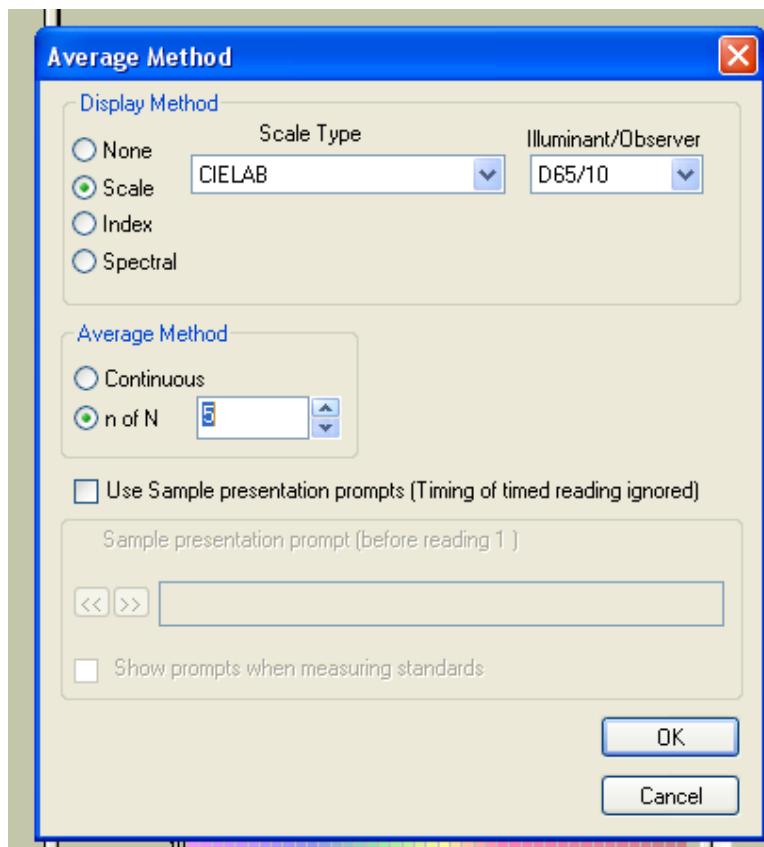
A typical MultiMode sequence to define the degree of UV optical brightening in white paper while averaging multiple readings consists of the following steps:

Select Sensor/Set Modes (F7) to standardize the instrument in both the LAV UV Calibrated (UV Included) mode, and the LAV UV filter IN (UV Excluded) modes. If necessary, run Sensor/UV Calibrate in the LAV UV Calibrated (UV Included) mode to calibrate the UV content incident at the measurement port.

1. To set up the Averaging Module and custom prompts.
 - a. Select "Options/Average Method".



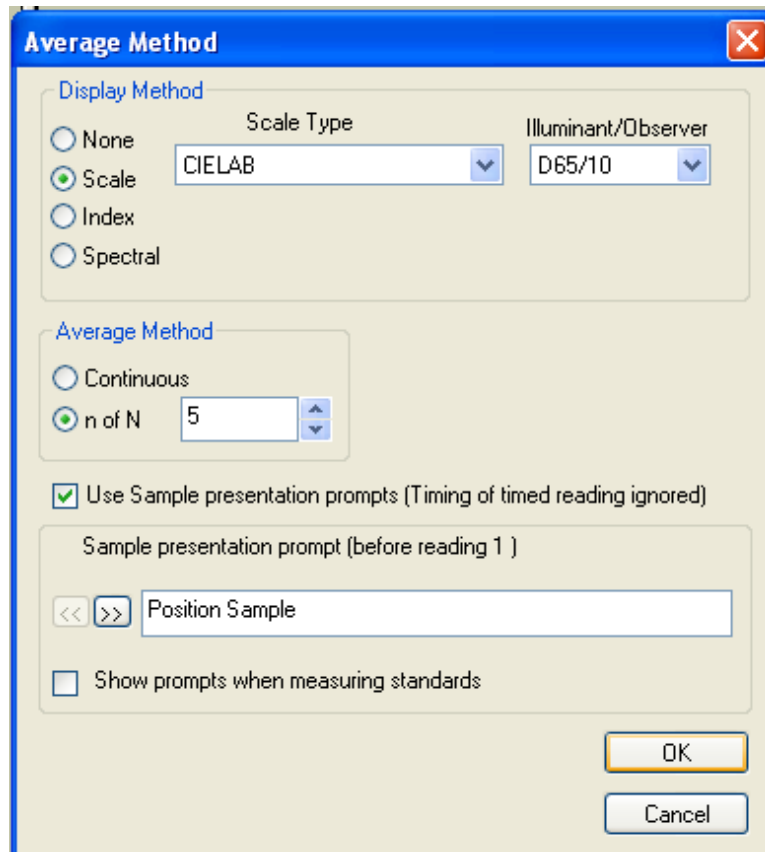
b. In “Display Method, select an appropriate color scale for the Averaging Module



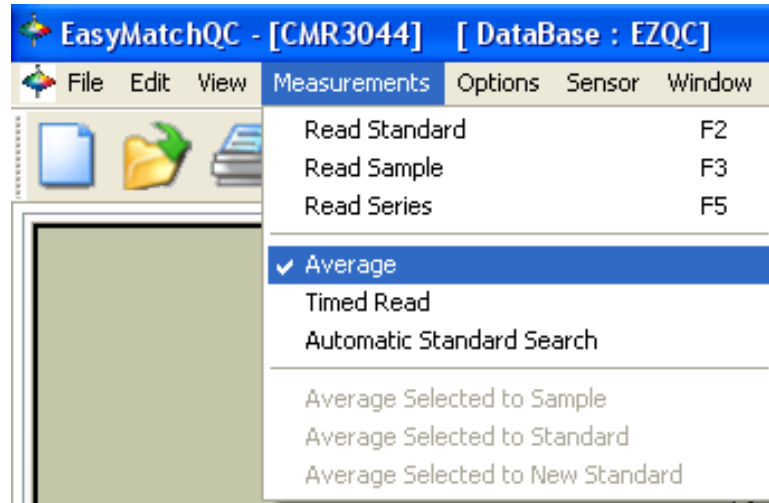
(usually matches that of the Color Data View).

c. Under “Average Method”, set “n of N” to 5 readings.

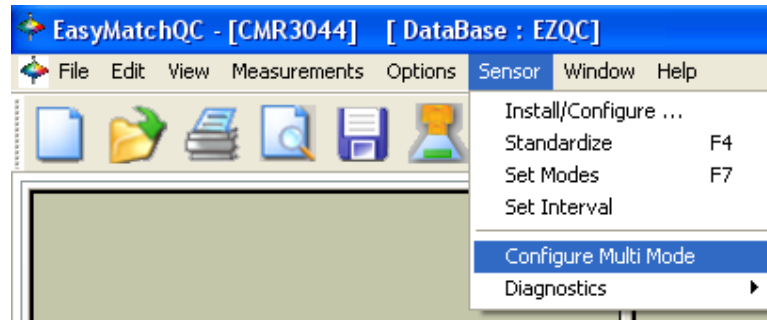
- d. To provide custom prompts for the operator, check the box beside “Use Sample presentation prompts” . This will enable the field below it and allow prompts to be entered (ie. “Position sample”) for each reading. Select “OK” to confirm.



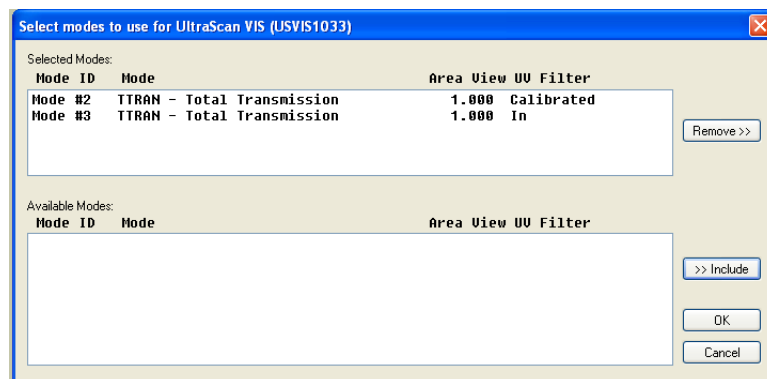
- a. To enable the averaging of multiple readings defined in the Average Method, select “Measurements/Average”. This item will be activated when checked.



2. To configure the Multi-Mode feature:

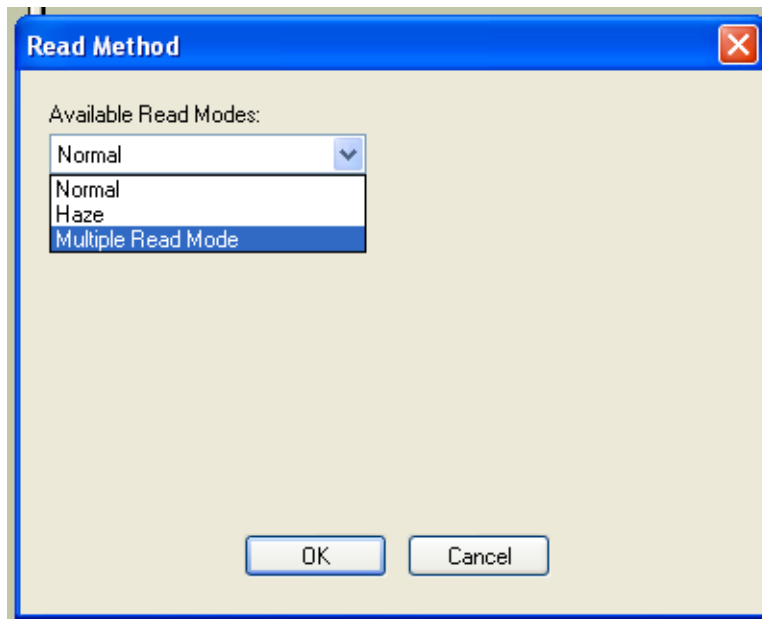


- a. Select "Sensor/Configure Multi-Mode."
- b. From "Available Modes" select the individual standardization modes you wish to take measurements in and "Include" the mode. When the mode is successfully included it will be shown in the "Selected Modes" category. To confirm these

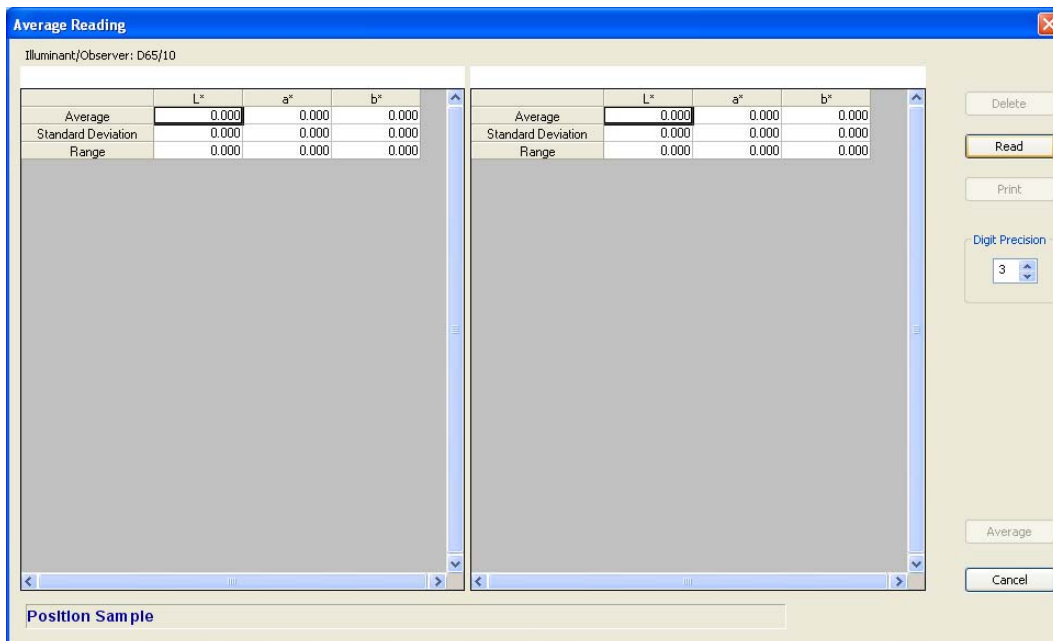


modes click “OK”.

3. To enable the Multi-Mode feature for the measurement:
 - a. Select “Options/Read Method”.
 - b. Under Available Read Modes select “Multiple Read Mode” and click “OK” to confirm.



4. To read a sample:
 - a. Select “Measurements/Read Sample”. The Average Multi-Mode Reading will display. Select “Read” on the right side of the display to initiate a reading.



- b. Continue taking measurements by selecting the “Read” button, taking care to note the sample prompts in blue at the bottom left of the screen.

Average Reading

Illuminant/Observer: D65/10

Mode #2 - TTRAN - Total Transmission				Mode #3 - TTRAN - Total Transmission			
	L*	a*	b*		L*	a*	b*
Average	36.547	0.901	-7.437	Average	35.937	-0.301	-2.111
Standard Deviation	0.001	0.013	0.015	Standard Deviation	0.004	0.002	0.013
Range	0.003	0.025	0.031	Range	0.008	0.004	0.025
1 of 5	36.546	0.897	-7.422	1 of 5	35.941	-0.302	-2.100
2 of 5	36.548	0.891	-7.436	2 of 5	35.934	-0.299	-2.108
3 of 5	36.547	0.916	-7.453	3 of 5	35.936	-0.302	-2.125

Buttons: Delete, Read, Print, Average, Cancel

Digit Precision: 3

Reposition Sample

- c. When all 5 readings have been taken, select “Average” for module to close and the average of the multiple sample readings of the samples to display in the main screen.

EasyMatchQC - [CMR3044] [DataBase : EZQC]

File Edit View Measurements Options Sensor Window Help

ID	L*	a*	b*	dL*	da*	db*
Paper LAV UV In	35.37	0.13	-3.28			
Paper LAV UV	35.77	1.17	-9.47			

Color Data Table - 1

Spectral Plot - 1 (Reflectance/Transmittance)

2D - Color Plot - 1 (No Standard) RELATIVE D65/10

CMR3044.jsd

Ready Current Sensor: UltraScan V15 "UVVIS1033" Current Stdz Mode: Mode #3 - TTRAN - Total Transmission - 1.000 In - In - Stdz, Expires: 14 July