

CMR-3178 Addendum to User's Manual

Description

CMR-3178 is a custom modification to EasyMatch QC+ER 4.70 and higher to display a Genentech correlation to EP Color, both calculated (EPgen 10-mm Calc [D65/10]) and reported (EPgen 10-mm Report [D65/10]).

Installation

CMR-3178 installs as any other version of EasyMatch QC+ER software.

For EasyMatch QC, follow the instructions and recommended practices for installing EasyMatch QC available at HunterLab's blog site - **MeasureTrueColor.com** or shortlink at <http://wp.me/24zt3> , then search on "install".

Steps for a successful new installation of EasyMatch QC software at <http://wp.me/p24zt3-a1>

For EasyMatch QC-ER, follow the instructions in the supplied Validation and Compliance Notebook.

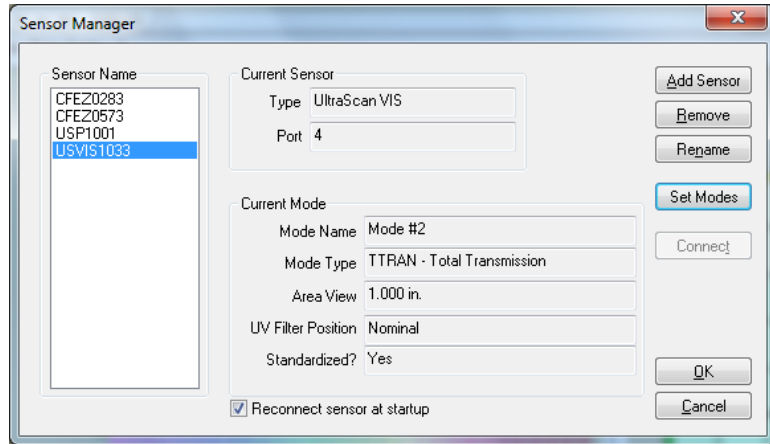
A hardware key programmed for CMR-3178 will be required to operate the software once installed.

Operation

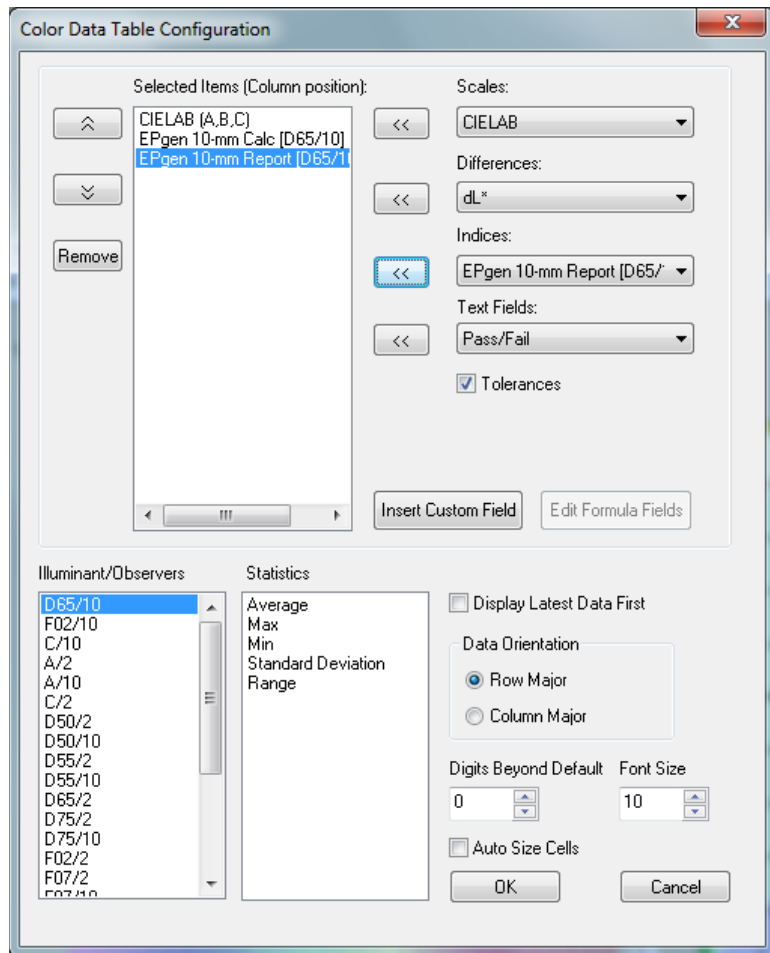
After installation, go to Help/About to verify CMR3178 is installed .



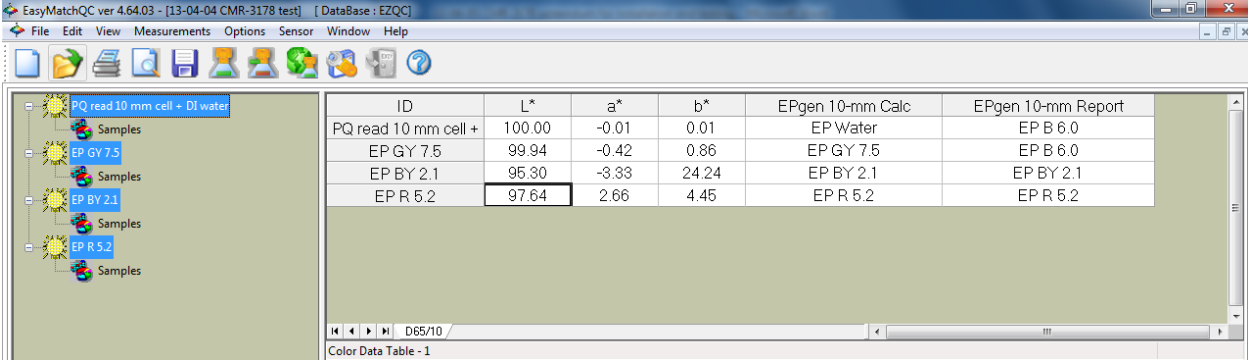
Load USVIS Sensor and standardize in a Transmission mode, typically TTRAN Transmission,



Put your mouse over the Color Data View/Right Click/Configure to **EPgen 10-mm Calc [D65/10]** and **EPgen 10-mm Report [D65/10]**.



While this is not the only Color Data View screen configuration, the Color Data View may look like this:



As a PQ Performance Qualification step, read back cell + DI water.

To further test, put your mouse over the Job Tree/R and enter test enter values from Genentech supplied data to verify implementation.

