

Addendum to ColorFlex EZ User's Manual

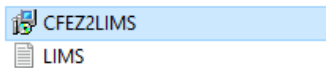
Description

CMR-3218 provides a program that allows a ColorFlex EZ to export BCU (baking contrast units) directly to a computer. This CMR is designed to only work with CMR-3116 (which is a modification to the CFEZ user interface that adds the BCU color index.)

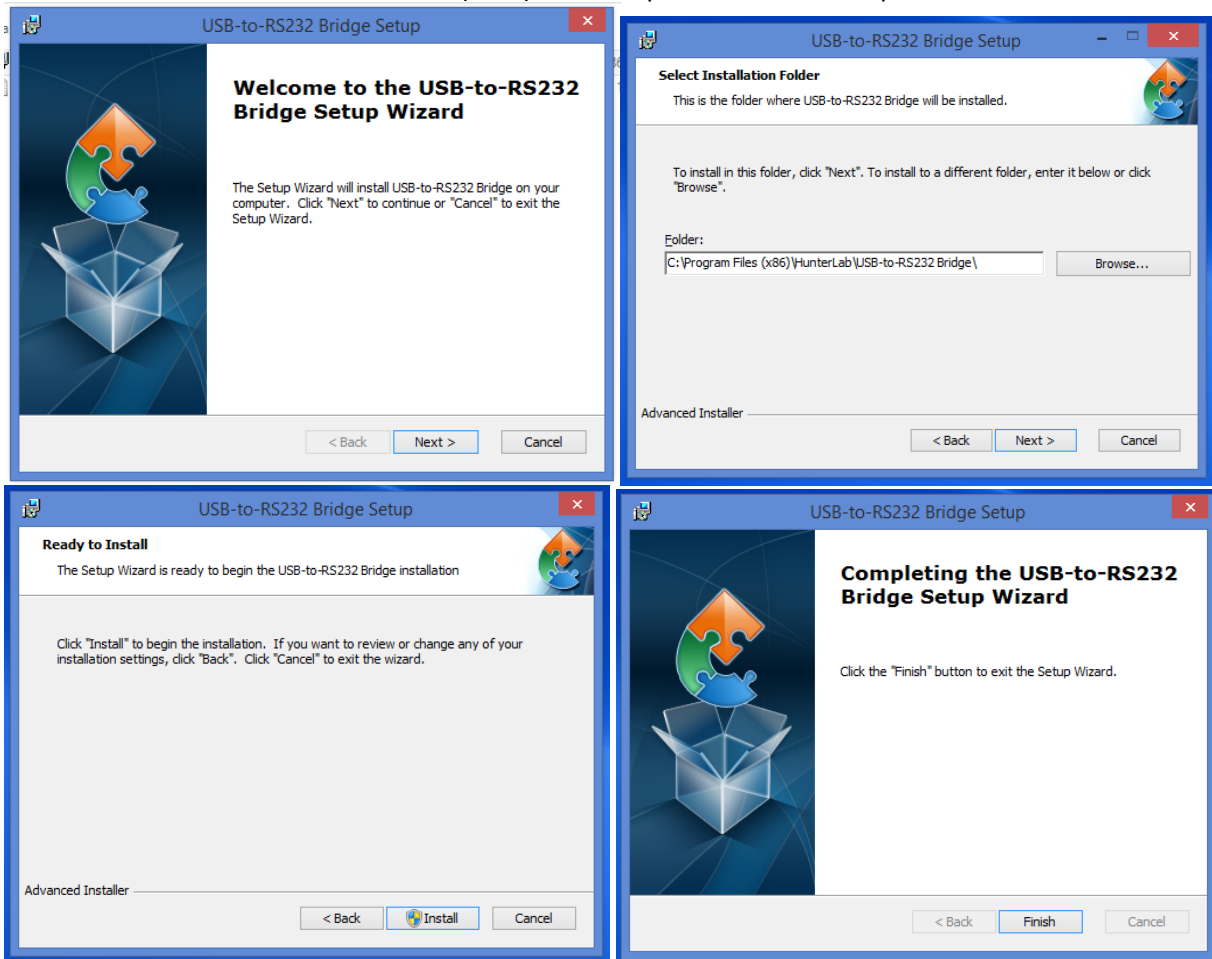
Installation

1. Install the CFEZ2LIMS program from the CD provided.

Name



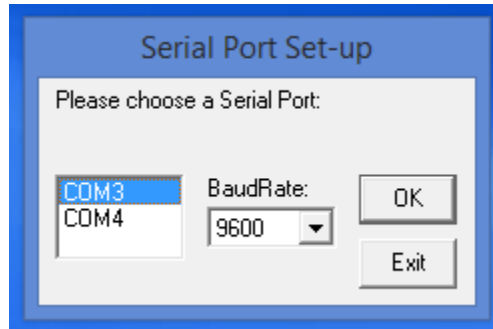
2. Follow the series of on-screen prompts to complete the installation process.



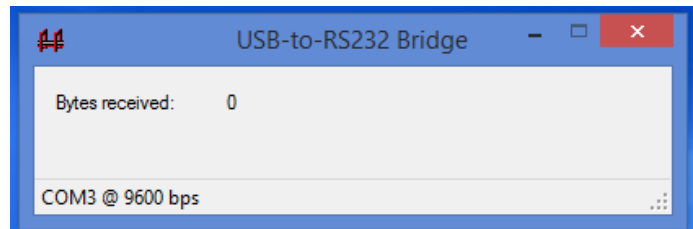
Operation

1. Once the program has finished installing, locate the desktop USB to RS232 Bridge application icon and launch the program.
2. Upon launching you will need to select the appropriate communications port and baud rate (default 9600). Click OK to connect and launch the program.

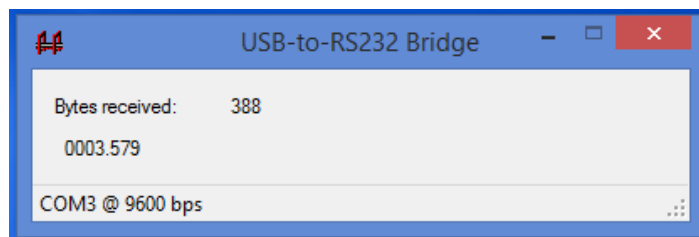
Please note that the CFEZ will need to be powered on to connect.



3. Once connected you will see the screen below.



4. When you initiate a reading on the CFEZ instrument you will see the program update with the measured values.



5. The program's window can be minimized to the tray area by closing the window. The program can be terminated only when it is minimized to the tray area by right-clicking on its icon and selecting "Exit".



Notes for Use

- It is recommended to install the software on a Windows 10 computer.
- This program is designed to work only with CMR 3116, which is a modification to the CFEZ user interface that adds the BCU color index.
- To use the software the CFEZ must be connected to the PC via USB and the PC must have an available COM port.
- The current view of the product setup in use must be configured to show BCU. AUTOSAVE in GLOBAL OPTIONS should be enabled or otherwise press the DOWN key after each measurement. The datalog must be cleared periodically so that it never becomes full, otherwise new measurements will not be transmitted.
- The output of the s/w is just the BCU value and is formatted as shown in the LIMS.txt file contained in the provided CD (screen shot below.)
- If the instrument is disconnected while the s/w is still running, the program must be terminated and restarted before data capture can occur again.

