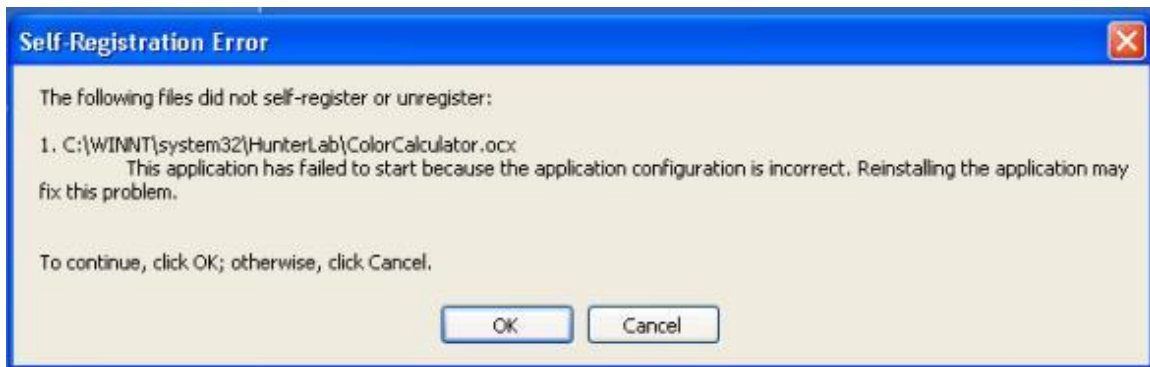


EZMQC Self Registration Error



This error indicates that some process in your computer has corrupted the registry setting for the Color Calculator.. I assume you clicked on OK to continue, so EZMQC should be installed but not able to calculate Color Data from the Spectral Data.

Let's try to manually register the Color Calculator:

1. Click on START → RUN.
2. Cut and paste the line below in to the Open box → OK.

C:\WINNT\System32\regsvr32

C:\WINNT\system32\HunterLab\ColorCalculator.ocx

This should register the program for you.